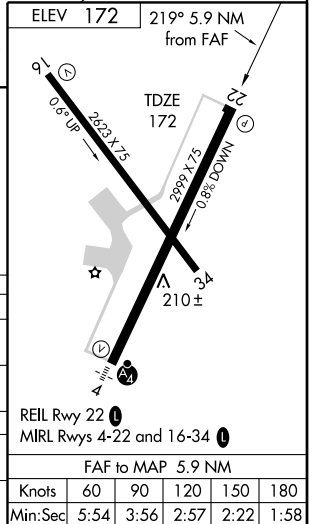
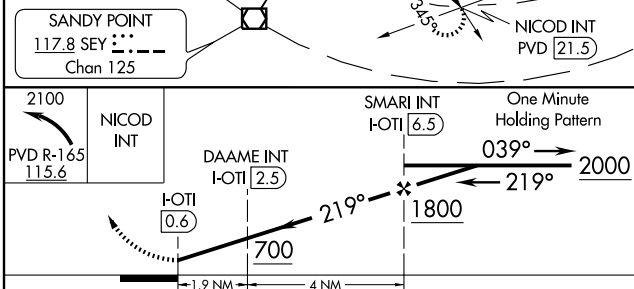
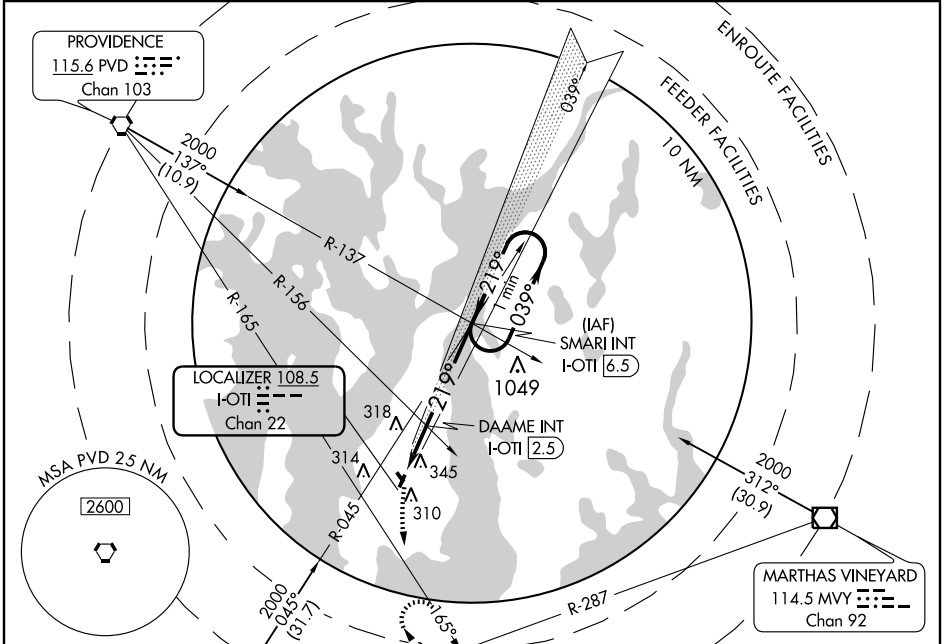


LOC RWY 22
NEWPORT STATE (UUU)

LOC/DME I-OTI 108.5 Chan 22	APP CRS 219°	Rwy Idg 2999 TDZE 172 Apt Elev 172
---	------------------------	---

NA MISSED APPROACH: Climbing left turn to 2100 via PVD VORTAC R-165 to NICOD Int/21.5 DME and hold.

ASOS 132.075	PROVIDENCE APP CON * 128.7 269.525	CLNC DEL 127.25	UNICOM 122.8 (CTAF) 0
------------------------	--	---------------------------	--



CATEGORY	A	B	C	D
S-22	700-1	528 (600-1)	700-1½ 528 (600-1½)	NA
CIRCLING	760-1	588 (600-1)	760-1½ 588 (600-1½)	NA
DAAME FIX MINIMUMS				
S-22	640-1	468 (500-1)	640-1¼ 468 (500-1¼)	NA
CIRCLING	760-1	588 (600-1)	760-1½ 588 (600-1½)	NA

NE-1, 22 OCT 2009 to 19 NOV 2009

NE-1, 22 OCT 2009 to 19 NOV 2009

REIL Rwy 22 **0**
MIRL Rwy 4-22 and 16-34 **0**

FAF to MAP 5.9 NM

Knots	60	90	120	150	180
Min:Sec	5:54	3:56	2:57	2:22	1:58