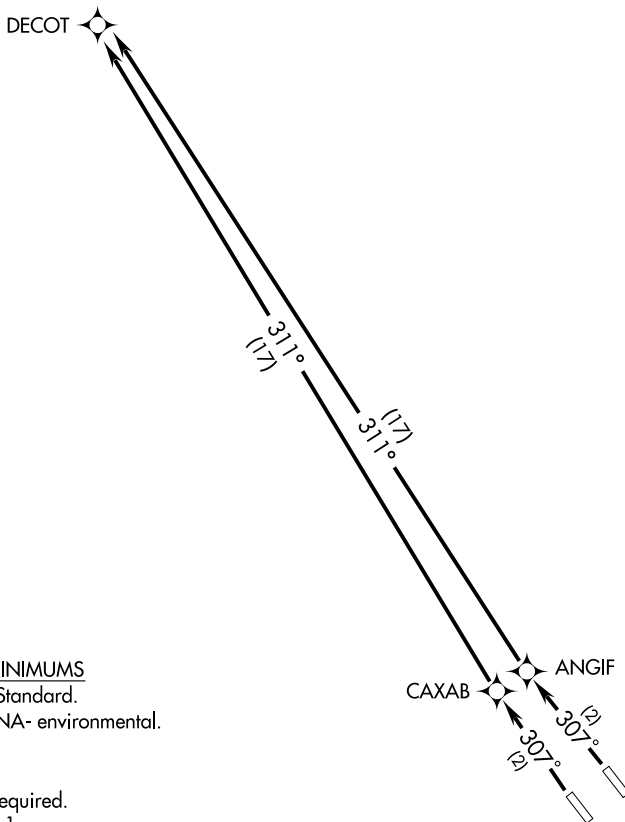


NORCAL DEP CON
121.3 270.35



TAKE-OFF MINIMUMS

Rwy 31L/R: Standard.

Rwy 13L/R: NA- environmental.

NOTE: 1. GPS Required.

2. RNAV 1

NOTE: Rwy 31L/R: Trees 1070 feet from departure end of runway, 500 feet right and left of centerline, 173 and 169 feet MSL.

NOTE: Rwy 31R: Light 125 feet from departure end of runway, 370 feet right of centerline, 159 MSL.

NOTE: Chart not to scale.



DEPARTURE ROUTE DESCRIPTION

TAKE-OFF RUNWAY 31L: Climb to 4000 via 307° course to CAXAB WP and 311° track to DECOT WP. Then via assigned route.

TAKE-OFF RUNWAY 31R: Climb to 4000 via 307° course to ANGIF WP and 311° track to DECOT WP. Then via assigned route.

TAKE-OFF RWY 13L/13R: NA.