

SULLIVAN, INDIANA

AL-5590 (FAA)

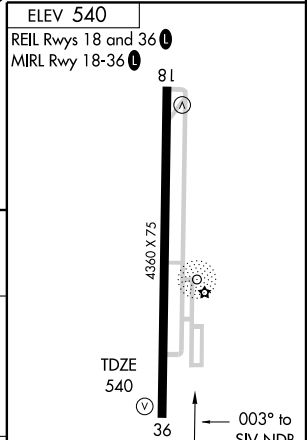
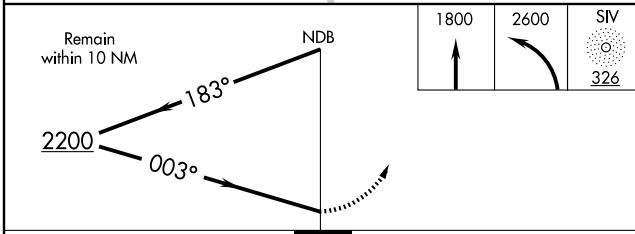
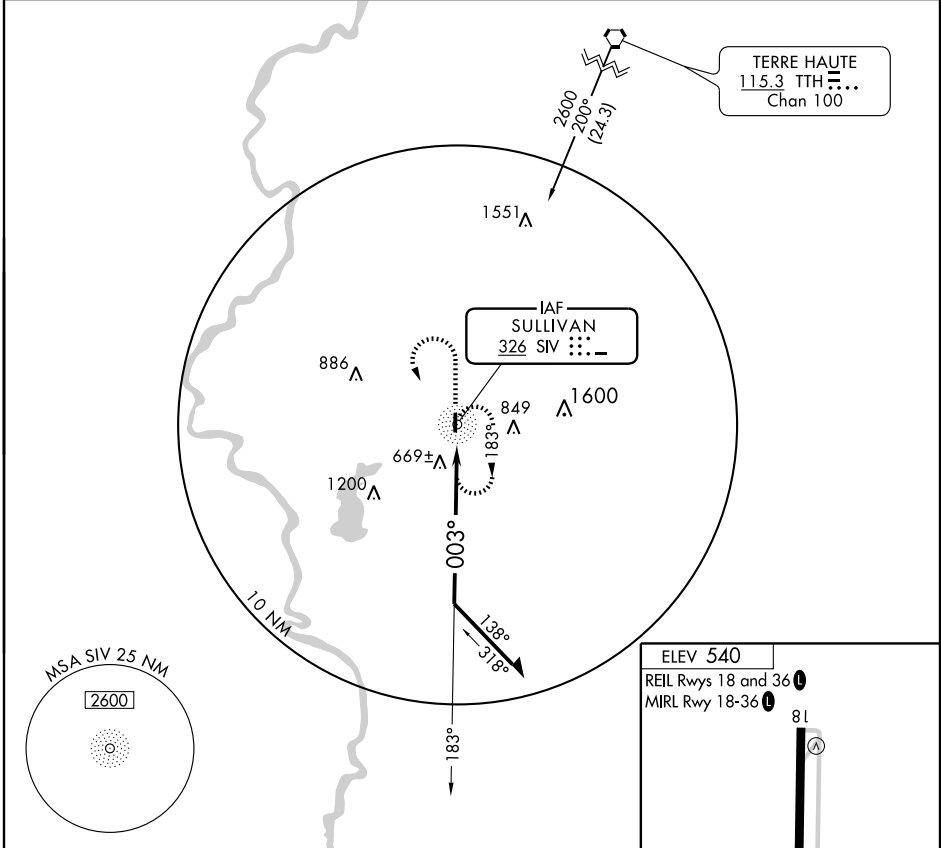
NDB RWY 36

SULLIVAN COUNTY (SIV)

NDB SIV 326	APP CRS 003°	Rwy Idg TDZE Apt Elev	4360 540 540
-----------------------	------------------------	-----------------------------	---

<p>▼ ▲ NA</p> <p>Use Terre Haute altimeter setting.</p>	<p>MISSED APPROACH: Climb to 1800 then climbing left turn to 2600 direct SIV NDB and hold.</p>
---	--

<p>HULMAN APP CON ★</p> <p>119.25 339.8</p>	<p>UNICOM</p> <p>122.8 (CTAF) 0</p>
--	--



CATEGORY	A	B	C	D	Knots	60	90	120	150	180
S-36	1080-1	540 (600-1)		NA	Min:Sec					
CIRCLING	1080-1	540 (600-1)		NA						

SULLIVAN, INDIANA
Amdt 7 08045

39°07'N - 87°27'W

SULLIVAN COUNTY (SIV)

NDB RWY 36

EC-2, 22 OCT 2009 to 19 NOV 2009

EC-2, 22 OCT 2009 to 19 NOV 2009