

SULLIVAN, INDIANA

AL-5590 (FAA)

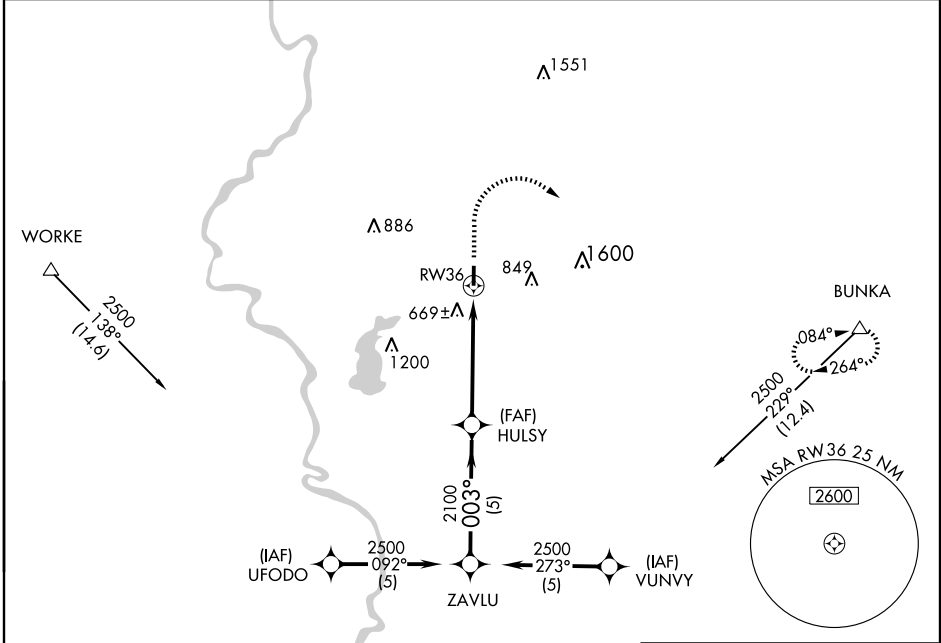
GPS RWY 36

SULLIVAN COUNTY (SIV)

APP CRS	Rwy Idg	4360
003°	TDZE	540
	Apt Elev	540

<p>▼ Use Terre Haute altimeter setting.</p> <p>▲ NA</p>	<p>MISSED APPROACH: Climb to 1600 then climbing right turn to 4000 direct BUNKA WP and hold.</p>
---	--

<p>HULMAN APP CON *</p> <p>119.25 339.8</p>	<p>UNICOM</p> <p>122.8 (CTAF) 0</p>
--	---



EC-2, 22 OCT 2009 to 19 NOV 2009

EC-2, 22 OCT 2009 to 19 NOV 2009

ELEV 540
REIL Rwy 18 and 36 0
MIRL Rwy 18-36 0

003° to RWY 36

	ZAVLU	HULSY	1600	4000	BUNKA
	2500	2100	▲	↷	△
Procedure Turn NA	003°		RWY 36		
	5 NM		5 NM		
CATEGORY	A	B	C	D	
S-36	980-1	440 (500-1)	NA		
CIRCLING	1060-1	520 (600-1)	NA		

SULLIVAN, INDIANA
Amdt 1 08045

39°07'N - 87°27'W

SULLIVAN COUNTY (SIV)

GPS RWY 36