

SULLIVAN, INDIANA

AL-5590 (FAA)

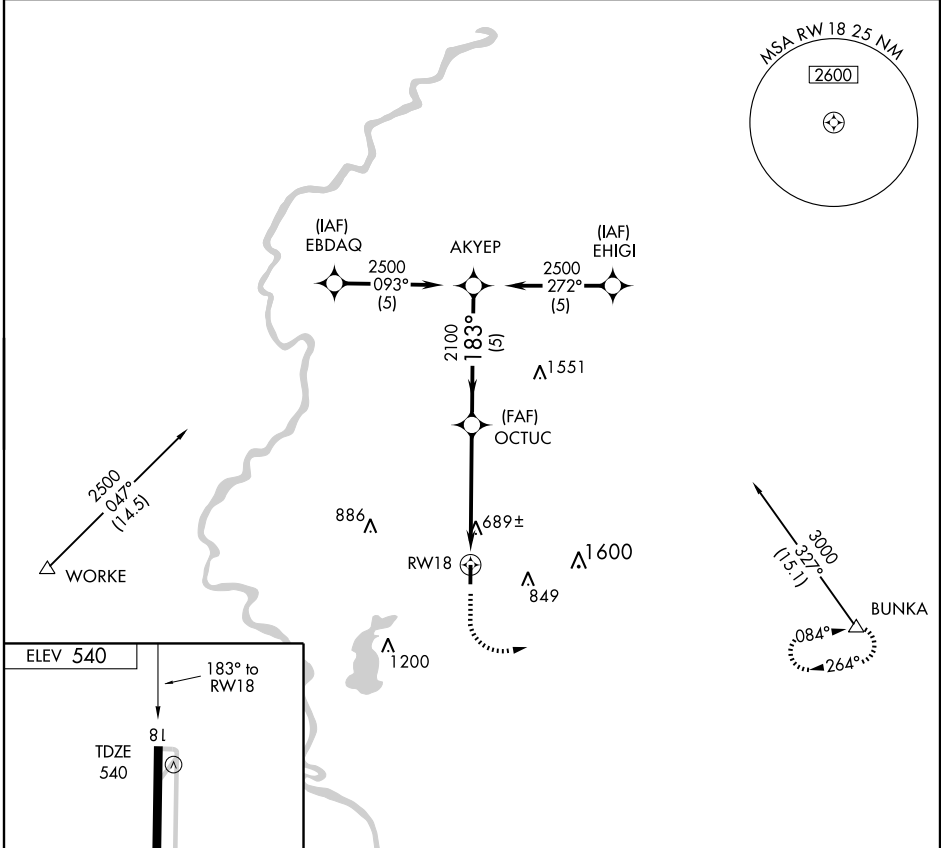
# GPS RWY 18

SULLIVAN COUNTY (SIV)

APP CRS <b>183°</b>	Rwy Idg <b>4360</b>
	TDZE <b>540</b>
	Apt Elev <b>540</b>

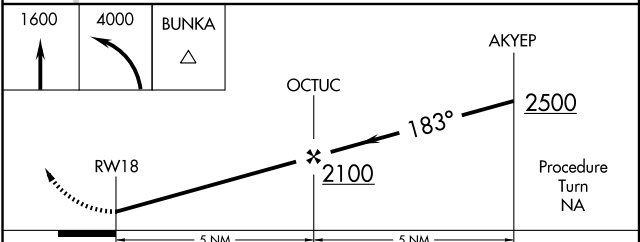
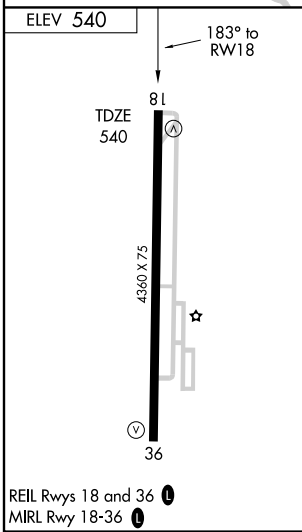
<p><b>▼</b> Use Terre Haute altimeter setting.</p> <p><b>▲</b> NA</p>	<p>MISSED APPROACH: Climb to 1600 then climbing left turn to 4000 direct BUNKA WP and hold.</p>
---	---

<p>HULMAN APP CON *</p> <p><b>119.25 339.8</b></p>	<p>UNICOM</p> <p><b>122.8 (CTAF) 0</b></p>
--	--



EC-2, 22 OCT 2009 to 19 NOV 2009

EC-2, 22 OCT 2009 to 19 NOV 2009



CATEGORY	A	B	C	D
S-18	1000-1	460 (500-1)		NA
CIRCLING	1060-1	520 (600-1)		NA

SULLIVAN, INDIANA  
Orig 08045

39°07'N - 87°27'W

SULLIVAN COUNTY (SIV)  
**GPS RWY 18**