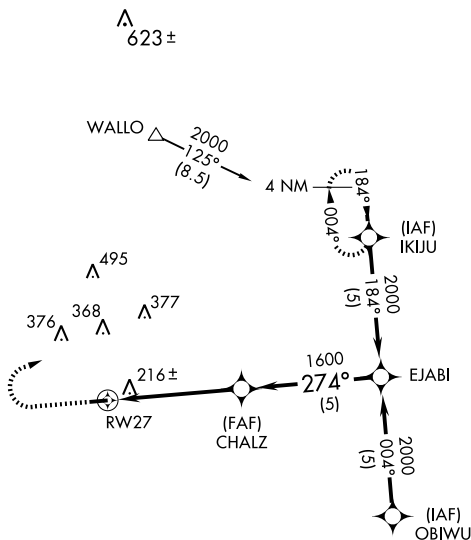


GPS RWY 27

WALLACE/ HENDERSON FIELD (ACZ)

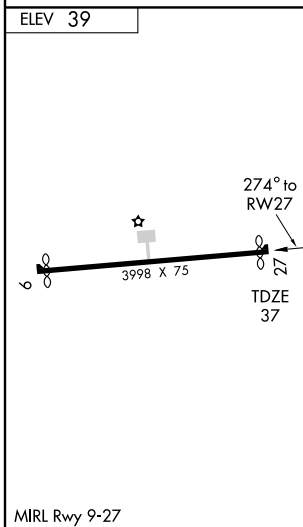
APP CRS 274°	Rwy Idg 3847
	TDZE 37
	Apt Elev 39

<p>NA Use Wilmington altimeter setting.</p>	<p>MISSED APPROACH: Climb to 1000 then climbing right turn to 2000 direct IKIJU WP and hold.</p>
<p>WILMINGTON APP CON ★ 135.75 257.6 346.35</p>	<p>UNICOM 122.8 (CTAF)</p>



SE-2, 22 OCT 2009 to 19 NOV 2009

SE-2, 22 OCT 2009 to 19 NOV 2009



ELEV 39	WILMINGTON ILM				MSA RW27 25 NM 3100
1000	2000	IKIJU			
RW27		CHALZ	EJABI	2000	
4.8 NM		5 NM		Procedure Turn NA	
CATEGORY	A	B	C	D	
S-27	580-1	543 (600-1)	580-1½ 543 (600-1½)	580-1¾ 543 (600-1¾)	
CIRCLING	640-1	601 (700-1)	640-1¾ 601 (700-1¾)	780-2½ 741 (800-2½)	