

MEXICO, MISSOURI

AL-5586 (FAA)

# VOR/DME RWY 24

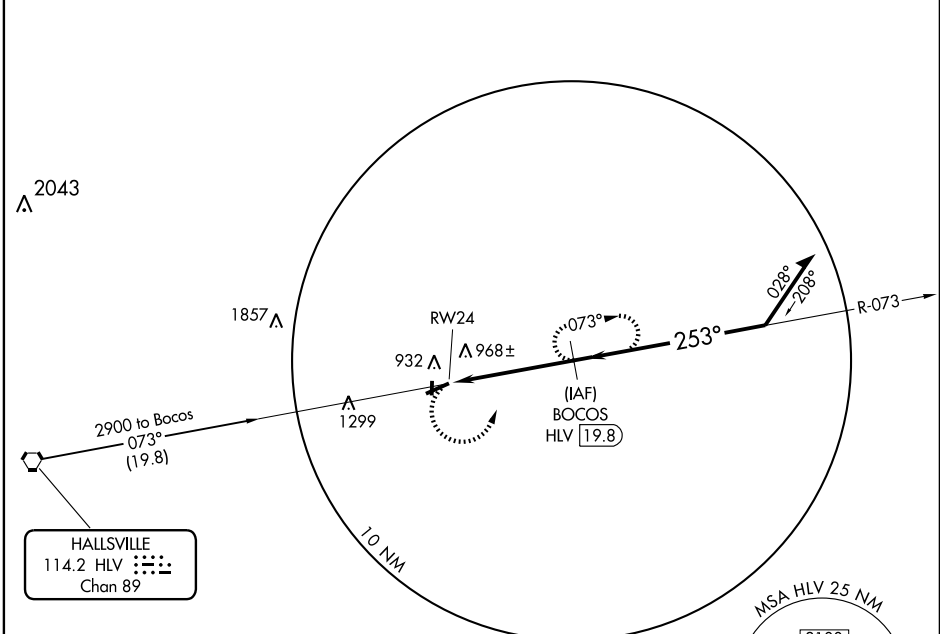
MEXICO MEMORIAL (MYJ)

VORTAC HLW <b>114.2</b> Chan <b>89</b>	APP CRS <b>253°</b>	Rwy Idg TDZE Apt Elev	<b>5130</b> <b>817</b> <b>823</b>
--	------------------------	-----------------------------	---

**NA** If local altimeter setting not received, use Columbia Rgnl altimeter setting and increase all MDAs 80 feet.  
VDP NA with Columbia Rgnl altimeter setting.

**MALS**  
MISSED APPROACH: Climbing left turn to 2300 via HLW R-073 to BOCOS 19.8 DME and hold.

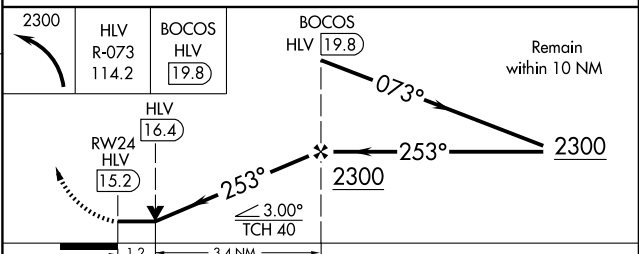
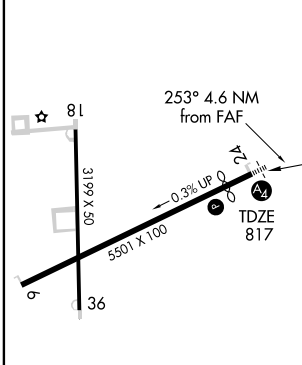
AWOS-3 <b>120.575</b>	MIZZU APP CON <b>124.375</b>	CTAF <b>122.9</b>
--------------------------	---------------------------------	----------------------



NC-3, 22 OCT 2009 to 19 NOV 2009

NC-3, 22 OCT 2009 to 19 NOV 2009

ELEV 823



CATEGORY	A	B	C	D
S-24	1220-1	403 (400-1)	1220-1¼ 403 (400-1¼)	NA
CIRCLING	1280-1	457 (500-1)	1280-1½ 457 (500-1½)	NA

- REIL Rwy 18 **1**
- MIRL Rwy 6-24 **1**
- LIRL Rwy 18-36 **1**

MEXICO, MISSOURI  
Amdt 2 09071

39°09'N-91°49'W

# MEXICO MEMORIAL (MYJ) VOR/DME RWY 24