

MOAB, UTAH

AL-5585 (FAA)

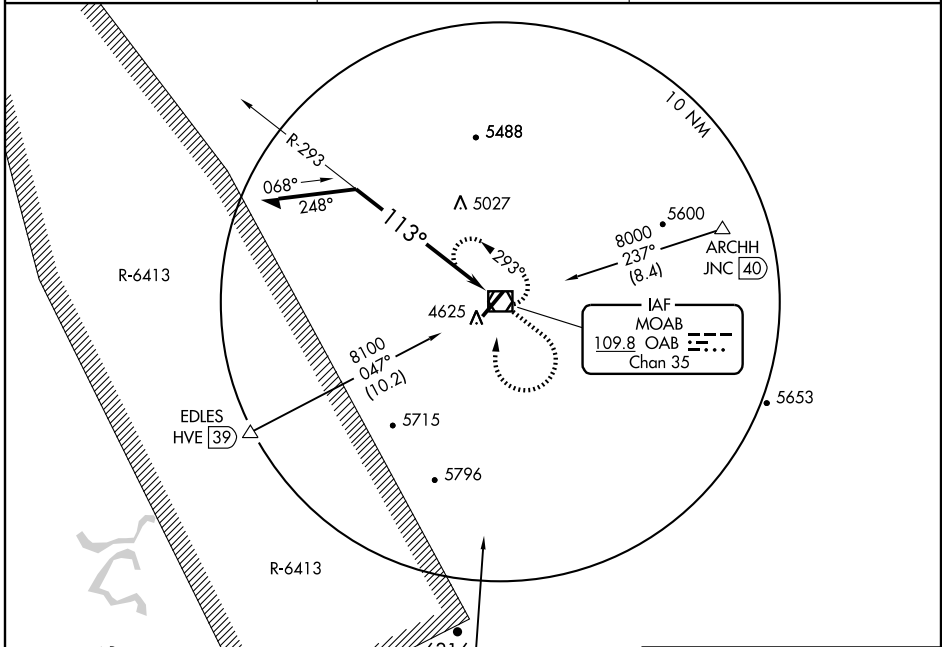
VOR-A

MOAB/CANYONLANDS FIELD (CNY)

VOR/DME OAB <b>109.8</b> Chan 35	APP CRS <b>113°</b>	Rwy Idg TDZE Apt Elev <b>4555</b>	N/A N/A N/A
--	------------------------	--------------------------------------	-------------------

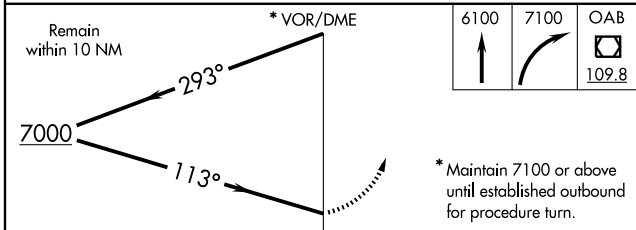
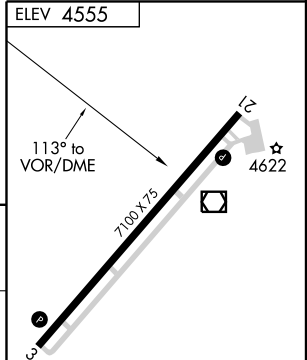
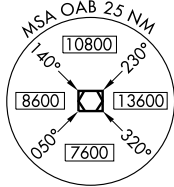
Procedure not authorized when R-6413 in operation. MISSED APPROACH: Climb to 6100 then climbing right turn to 7100 direct OAB VOR/DME and hold.

ASOS <b>118.525</b>	DENVER CENTER <b>134.5 327.8</b>	UNICOM <b>122.8 (CTAF)</b>
------------------------	-------------------------------------	-------------------------------



SW-4, 22 OCT 2009 to 19 NOV 2009

SW-4, 22 OCT 2009 to 19 NOV 2009



CATEGORY	A	B	C	D
CIRCLING	5500-1¼ 945 (1000-1¼)		5500-2¾ 945 (1000-2¾)	5500-3 945 (1000-3)

REIL Rwys 3 and 21  
MIRL Rwy 3-21

MOAB, UTAH  
Amdt 10A 09015

38°45'N-109°45'W

MOAB/CANYONLANDS FIELD (CNY)

VOR-A