

PINE MOUNTAIN, GEORGIA

AL-5583 (FAA)

VORTAC LGC 115.6 Chan 103	APP CRS 126°	Rwy Idg TDZE Apt Elev N/A N/A 902
---	------------------------	---

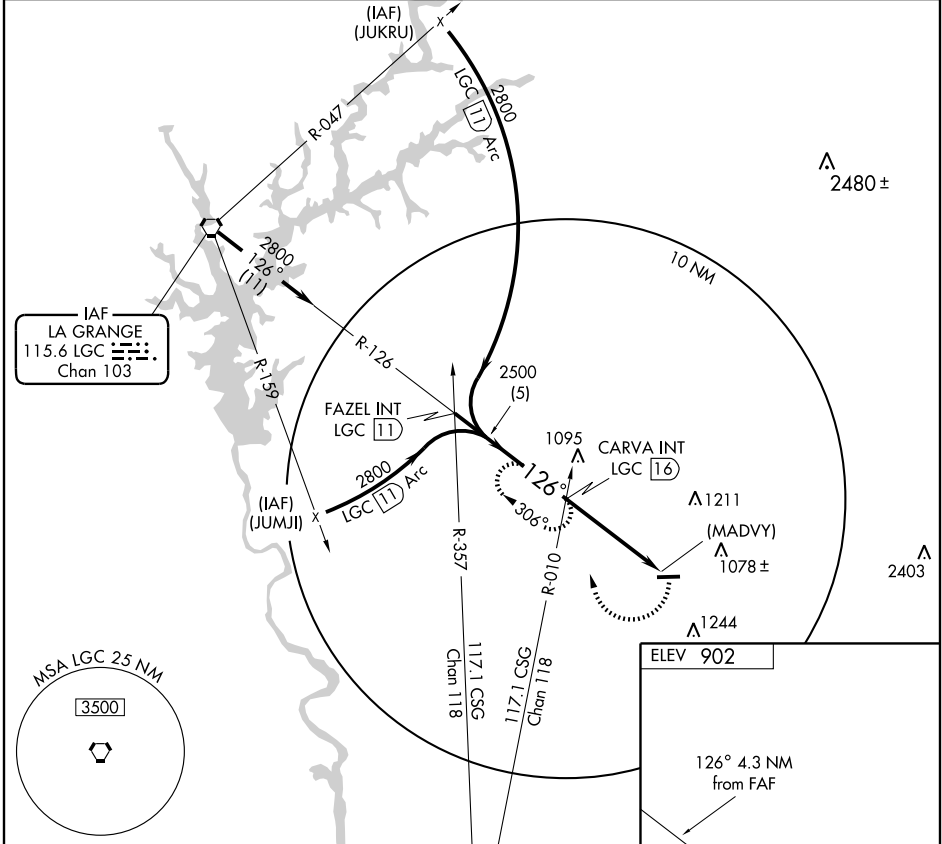
VOR or GPS-A

PINE MOUNTAIN/HARRIS COUNTY (PIM)

NA Use La Grange altimeter setting; if not received, use Columbus altimeter setting and increase all MDAs 60 feet.

MISSED APPROACH: Climbing right turn to 2500 via LGC R-126 to CARVA Int/LGC 16 DME and hold.

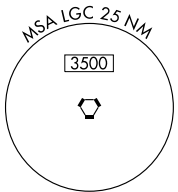
ATLANTA APP CON ★ 125.5 323.1	CLNC DEL 127.7	UNICOM 122.8 (CTAF) 0
---	--------------------------	--



SE-4, 22 OCT 2009 to 19 NOV 2009

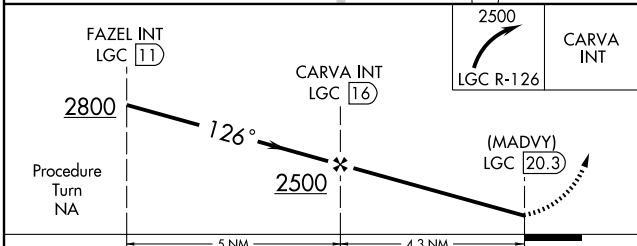
SE-4, 22 OCT 2009 to 19 NOV 2009

IAF
LA GRANGE
115.6 LGC
Chan 103



ELEV 902

126° 4.3 NM from FAF



CATEGORY	A	B	C	D	FAF to MAP 4.3 NM					
CIRCLING	1440-1	1440-1¼	1440-1½	1640-2¼	Knots	60	90	120	150	180
	538 (600-1)	538 (600-1¼)	538 (600-1½)	738 (800-2¼)	Min:Sec	4:18	2:52	2:09	1:43	1:26

PINE MOUNTAIN, GEORGIA
Amdt 4 09015

VOR or GPS-A

PINE MOUNTAIN/HARRIS COUNTY (PIM)

32° 50'N - 84° 53'W