
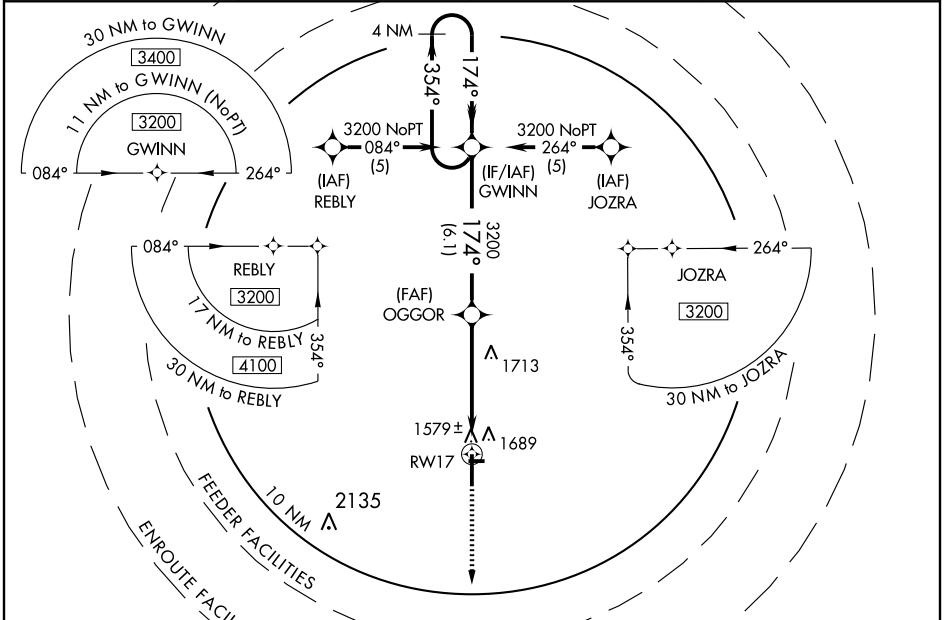


WAAS CH 50109 W17A	APP CRS 174°	Rwy Idg 6705 TDZE 1530 Apt Elev 1533
--	------------------------	---

RNAV (GPS) RWY 17

NEWTON-CITY-COUNTY (E WK)

<p>⚠ DME/DME RNP-0.3 NA. If local altimeter setting not received, use Wichita Mid-Continent altimeter setting; increase DAs/MDAs 100 feet. VDP NA when using Wichita Mid-Continent altimeter setting. For inoperative MALSR, increase LPV visibility to 1.</p>		<p>MALSR</p> 	<p>MISSED APPROACH: Climb to 3600 direct SPINA and hold.</p>
AWOS-3 123.875	WICHITA APP CON 125.5 306.2	CLNC DEL 126.55	UNICOM 123.0 (CTAF) 0



NC-2, 22 OCT 2009 to 19 NOV 2009

NC-2, 22 OCT 2009 to 19 NOV 2009



CATEGORY	A	B	C	D
LPV DA		1791-½	261 (300-½)	
LNAV/VNAV DA		NA		
LNAV MDA	2020-½ 490 (500-½)	2020-¾ 490 (500-¾)	2020-1 490 (500-1)	
CIRCLING	2020-1 487 (500-1)	2020-1½ 487 (500-1½)	2100-2 567 (600-2)	

