

NEWTON, KANSAS

AL-5582 (FAA)

NDB RWY 35

NEWTON-CITY-COUNTY (EWK)

NDB EWK 281	APP CRS 359°	Rwy Idg 7003
		TDZE 1527
		Apt Elev 1533

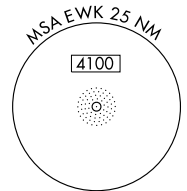
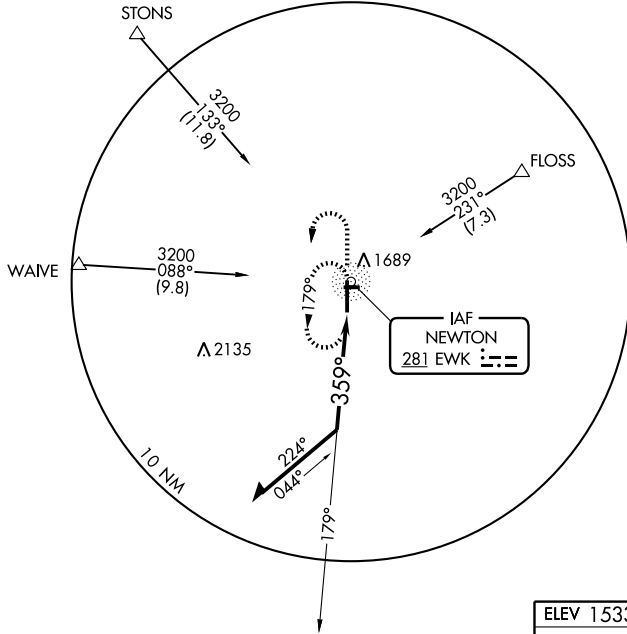
▲ NA

MISSED APPROACH: Climb to 2500, then climbing left turn to 3200 direct EWK NDB and hold.

AWOS-3 123.875	WICHITA APP CON 125.5 306.2	CLNC DEL 126.55	UNICOM 123.0 (CTAF) 0
--------------------------	---------------------------------------	---------------------------	---------------------------------

NC-2, 22 OCT 2009 to 19 NOV 2009

NC-2, 22 OCT 2009 to 19 NOV 2009



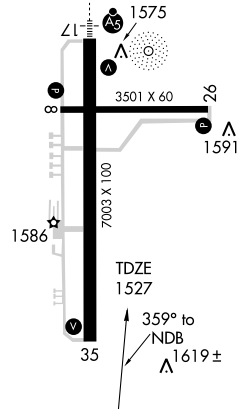
▲ 2549
▲ 2549

ELEV 1533 **D**

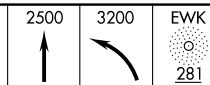
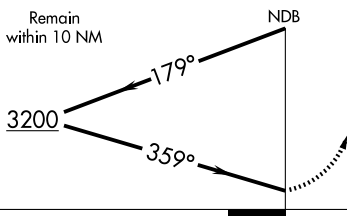
REIL Rwy 8, 26, and 35 **I**

HIRL Rwy 17-35 **I**

MIRL Rwy 8-26



Remain within 10 NM



CATEGORY	A	B	C	D
S-35	1960-1 433 (500-1)		1960-1¼ 433 (500-1¼)	1960-1½ 433 (500-1½)
CIRCLING	2000-1 467 (500-1)		2000-1½ 467 (500-1½)	2100-2 567 (600-2)

NEWTON, KANSAS
Amdt 3 08325

38°03'N-97°17'W

NEWTON-CITY-COUNTY (EWK)
NDB RWY 35