



LOC I-CAC 111.7	APP CRS 174°	Rwy Idg 6705
		TDZE 1530
		Apt Elev 1533

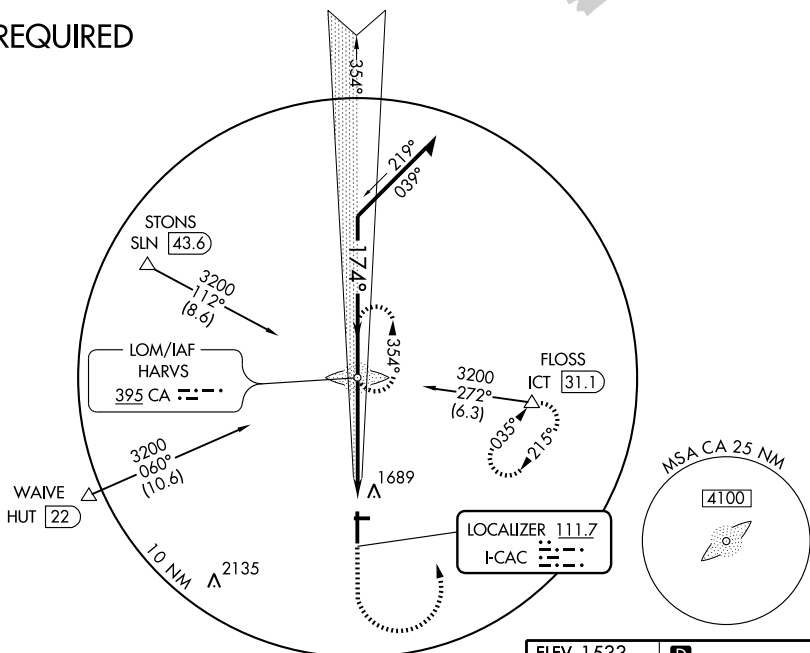
ILS or LOC RWY 17
NEWTON-CITY-COUNTY (E WK)

⚠ If local altimeter setting not received, use Wichita Mid-Continent altimeter setting and increase DA to 1817/MDAs 100 feet. For inoperative MALSR increase S-LOC 17 Cat D visibility to 1/4 mile. ADF Required.

MALSR  MISSED APPROACH: Climb to 2500 then climbing left turn to 3200 direct HARVS LOM and hold.

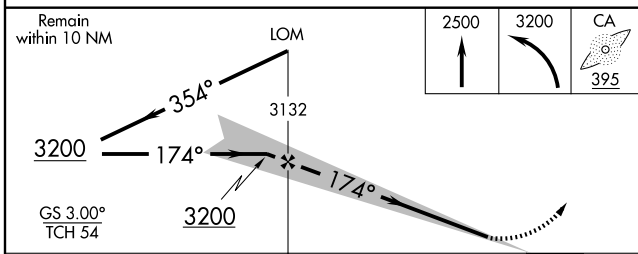
AWOS-3 123.875	WICHITA APP CON 125.5 306.2	CLNC DEL 126.55	UNICOM 123.0 (CTAF) 
--------------------------	---------------------------------------	---------------------------	---

ADF REQUIRED



NC-2, 22 OCT 2009 to 19 NOV 2009

NC-2, 22 OCT 2009 to 19 NOV 2009



CATEGORY	A	B	C	D
S-ILS 17		1730-1/2	200 (200-1/2)	
S-LOC 17		1900-1/2	370 (400-1/2)	1900-3/4 370 (400-3/4)
CIRCLING	2000-1	467 (500-1)	2000-1 1/2 467 (500-1 1/2)	2100-2 567 (600-2)

