

BEND, OREGON

AL-5579 (FAA)

RNAV (GPS) Z RWY 16

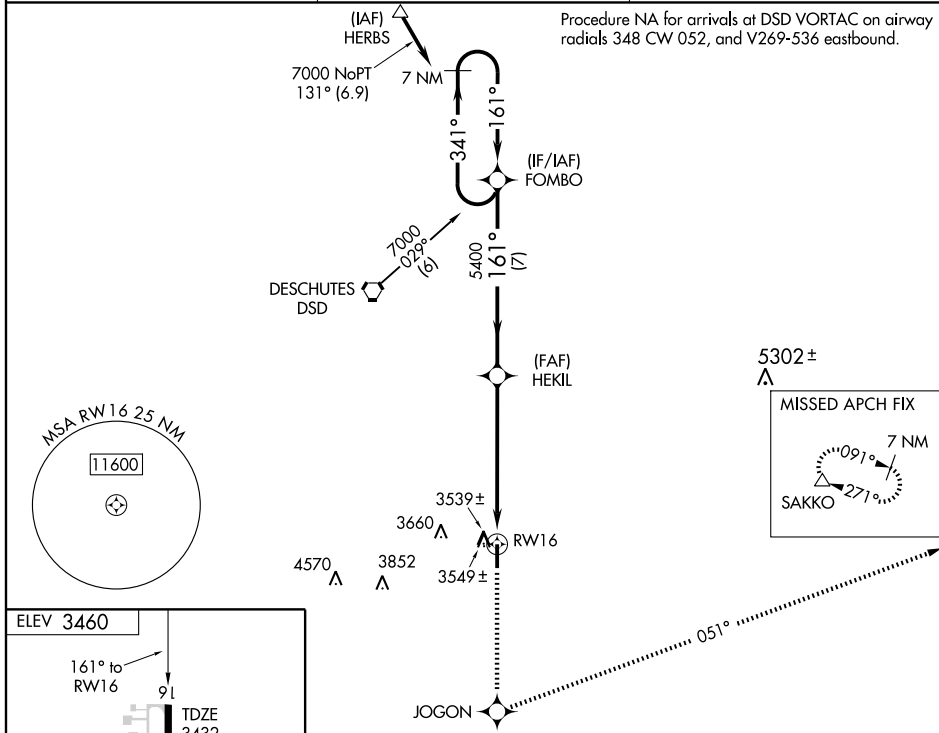
BEND MUNI (BDN)

WAAS CH 81906 W16A	APP CRS 161°	Rwy Idg 5200 TDZE 3432 Apt Elev 3460
--	------------------------	---

NA When local altimeter setting not received, use Redmond altimeter setting and increase all DA/MDAs by 80 feet, LPV visibilities 1/2 mile all Cats, LNAV/VNAV visibilities 1/4 mile all Cats, LNAV Cat D visibility 1/4 mile, and circling Cat C visibility 1/4 mile.
For uncompensated Baro-VNAV systems, procedure NA below -21°C (-5°F) or above 42°C (107°F).
DME/DME RNP-0.3 NA. Visibility reduction by helicopters NA.

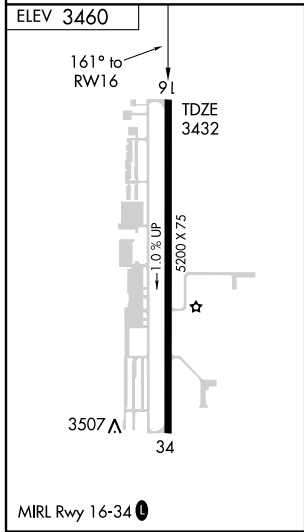
MISSED APPROACH: Climb to 9500 direct JOGON and left turn via 051° track to SAKKO and hold, continue climb-in-hold to 9500.

AWOS-3 134.425	SEATTLE CENTER 128.15 257.75	UNICOM 123.0 (CTAF)
--------------------------	--	-------------------------------



NW-1, 22 OCT 2009 to 19 NOV 2009

NW-1, 22 OCT 2009 to 19 NOV 2009



7 NM Holding Pattern	FOMBO	9500 JOGON	SAKKO	
7000 ← 341°	→ 161°	HEKIL 5400	051° track	
GS 3.00°	→ 161°	5400	* 1.2 NM to RWY 16	
TCH 50	→ 161°	5400	* LNAV only	
	7 NM	4.8 NM	1.2 NM	
CATEGORY	A	B	C	D
LPV DA		3682-1	250 (300-1)	
LNAV/VNAV DA		3809-1½	377 (400-1½)	
LNAV MDA	3840-1	408 (400-1)	3840-1¼	408 (400-1¼)
CIRCLING	3940-1 480 (500-1)	3980-1 520 (600-1)	4000-1½ 540 (600-1½)	4040-2 580 (600-2)

BEND, OREGON
Orig 08045

44°06'N-121°12'W

RNAV (GPS) Z RWY 16

BEND MUNI (BDN)