

BEND, OREGON

AL-5579 (FAA)

# RNAV (GPS) Y RWY 16

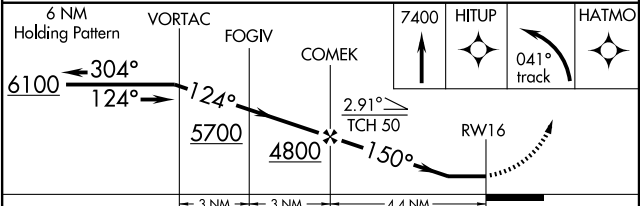
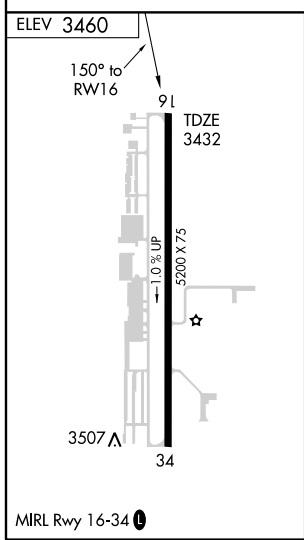
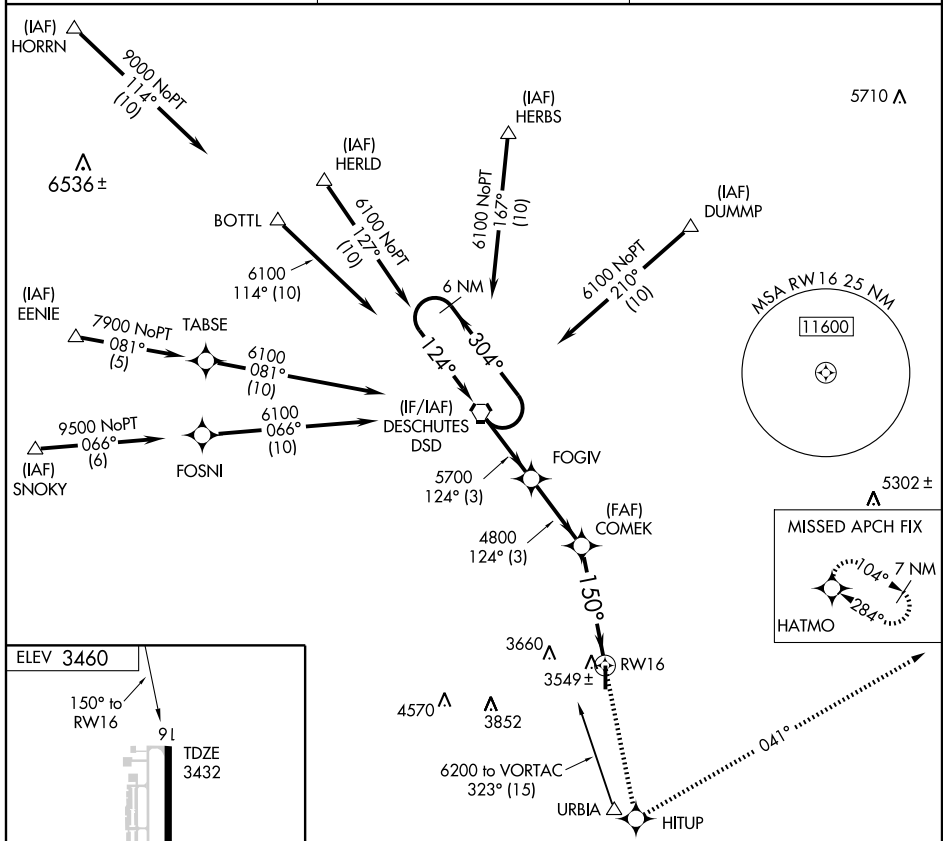
BEND MUNI (BDN)

APP CRS <b>150°</b>	Rwy Idg <b>5200</b> TDZE <b>3432</b> Apt Elev <b>3460</b>
------------------------	---

**NA** DME/DME RNP -0.3 NA. Visibility reduction by helicopters NA. When local altimeter setting not received, use Redmond altimeter setting and increase all MDAs 80 feet, and LNAV Cats C/D visibility ¼ mile, and circling Cat C visibility ¼ mile.

**MISSED APPROACH:** Climb to 7400 direct HITUP and left turn via 041° track to HATMO and hold, continue climb-in-hold to 7400.

AWOS-3 <b>134.425</b>	SEATTLE CENTER <b>128.15 257.75</b>	UNICOM <b>123.0 (CTAF) 0</b>
--------------------------	--	---------------------------------



CATEGORY	A	B	C	D
LNAV MDA	3800-1 368 (400-1)			3800-1¼ 368 (400-1¼)
CIRCLING	3940-1 480 (500-1)	3980-1 520 (600-1)	4000-1½ 540 (600-1½)	4040-2 580 (600-2)

BEND, OREGON  
Amdt 1A 09239

44°06'N-121°12'W

# RNAV (GPS) Y RWY 16

NW-1, 22 OCT 2009 to 19 NOV 2009

NW-1, 22 OCT 2009 to 19 NOV 2009