

BEND, OREGON

AL-5579 (FAA)

# RNAV (GPS) RWY 34

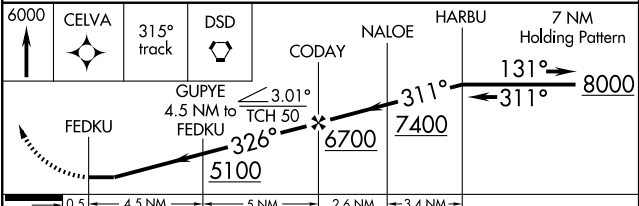
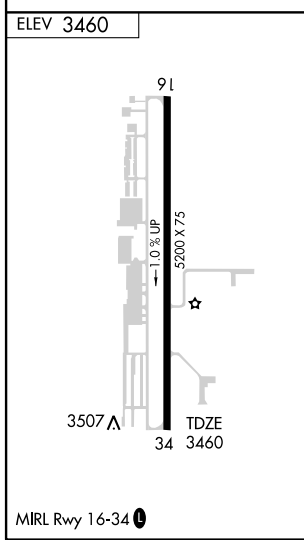
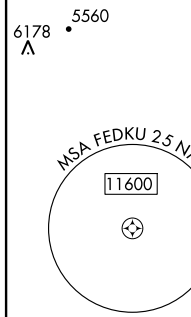
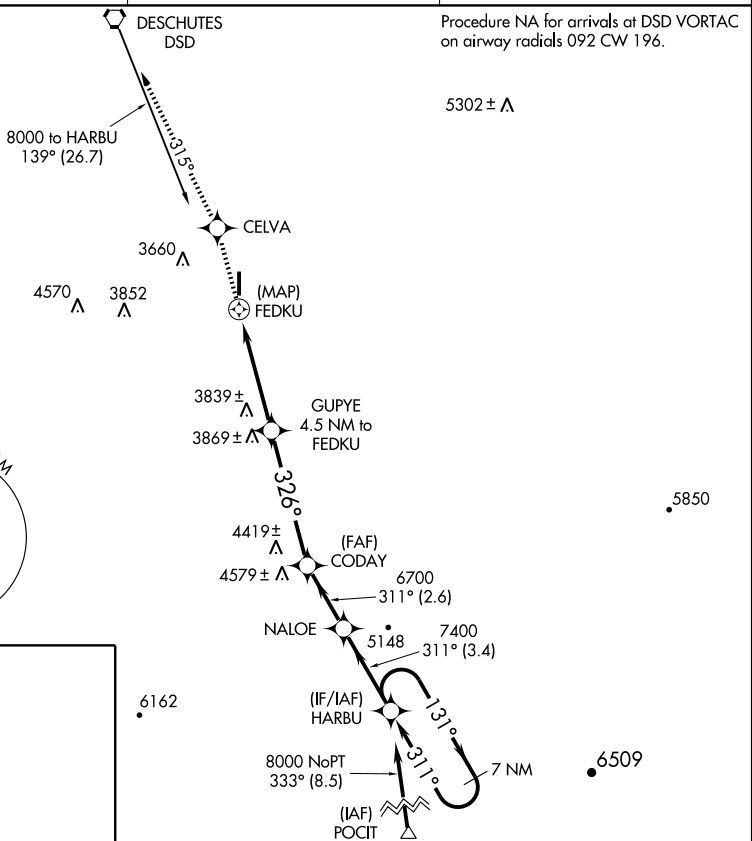
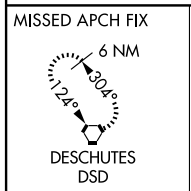
BEND MUNI (BDN)

APP CRS <b>326°</b>	Rwy Idg <b>5200</b>
	TDZE <b>3460</b>
	Apt Elev <b>3460</b>

**NA** DME/DME RNP-0.3 NA. Visibility reduction by helicopters NA.  
When local altimeter setting not received, use Redmond altimeter setting and increase all MDAs 80 feet, LNAV Cats C/D visibility ¼ mile and Circling Cat C/D visibility ¼ mile.

**MISSED APPROACH:** Climb to 6000 direct CELVA and via 315° track to DESCHUTES VORTAC and hold

AWOS-3 <b>134.425</b>	SEATTLE CENTER <b>128.15 257.75</b>	UNICOM <b>123.0 (CTAF)</b>
--------------------------	--	-------------------------------



CATEGORY	A	B	C	D
LNAV MDA	4100-1	640 (700-1)	4100-1¾ 640 (700-1¾)	4100-2 640 (700-2)
CIRCLING	4100-1	640 (700-1)	4100-1¾ 640 (700-1¾)	4100-2 640 (700-2)

BEND, OREGON  
Orig 09239

44°06'N-121°12'W

# RNAV (GPS) RWY 34

BEND MUNI (BDN)

NW-1, 22 OCT 2009 to 19 NOV 2009

NW-1, 22 OCT 2009 to 19 NOV 2009