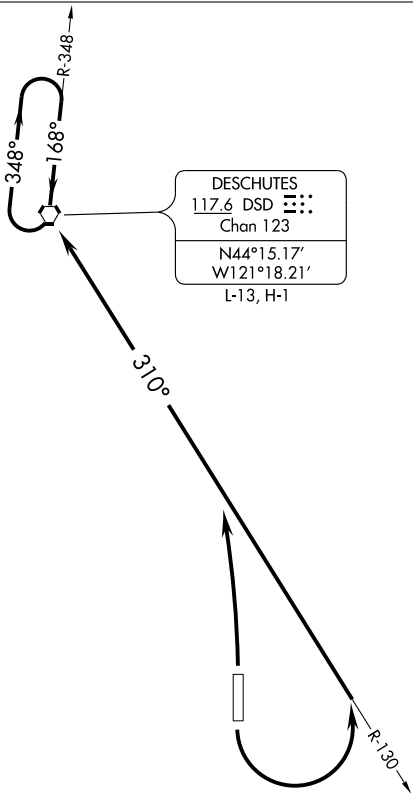


BEND ONE DEPARTURE (OBSTACLE)

SEATTLE CENTER
128.15 257.75
CTAF 123.0



DESCHUTES	
117.6 DSD	⋮⋮⋮
Chan 123	
N44°15.17'	
W121°18.21'	
L-13, H-1	

TAKE-OFF MINIMUMS

Rwys 16, 34: Standard.

TAKE-OFF OBSTACLE NOTES

- Rwy 16: Trees beginning 75' from DER, 412' left of centerline, up to 43' AGL/3572' MSL.
Trees beginning 432' from DER, 5' right of centerline, up to 37' AGL/3541' MSL.
Terrain beginning 27' from DER, 197' right of centerline, up to 3469' MSL.
Road 1' from DER, 414' left of centerline, 17' AGL/3466' MSL.
- Rwy 34: Trees beginning 306' from DER, 178' left of centerline, up to 25' AGL/3436' MSL.
Road beginning 460' from DER, 414' left of centerline, up to 17' AGL/3425' MSL.
Bush 94' from DER, 443' left of centerline, 4' AGL/3407' MSL.
Terrain beginning 1' from DER, 147' left of centerline, up to 3408' MSL.
Trees beginning 52' from DER, 252' right of centerline, up to 39' AGL/3429' MSL.

NOTE: Chart not to scale.

DEPARTURE ROUTE DESCRIPTION

TAKE-OFF RUNWAY 16: Climbing left turn to intercept DSD R-130 to DSD VORTAC, Thence

TAKE-OFF RUNWAY 34: Climbing left turn to intercept the DSD R-130 to DSD VORTAC, Thence

. . . . Climb in DSD VORTAC holding pattern to cross DSD VORTAC at or above the MEA/MCA for the route of flight.

NW-1, 22 OCT 2009 to 19 NOV 2009

NW-1, 22 OCT 2009 to 19 NOV 2009