

NDB RWY 31

ROCKINGHAM/ RICHMOND COUNTY (R/CZ)

NDB RCZ 375	APP CRS 314°	Rwy ldg TDZE Apt Elev	4799 357 358
-----------------------	------------------------	-----------------------------	---

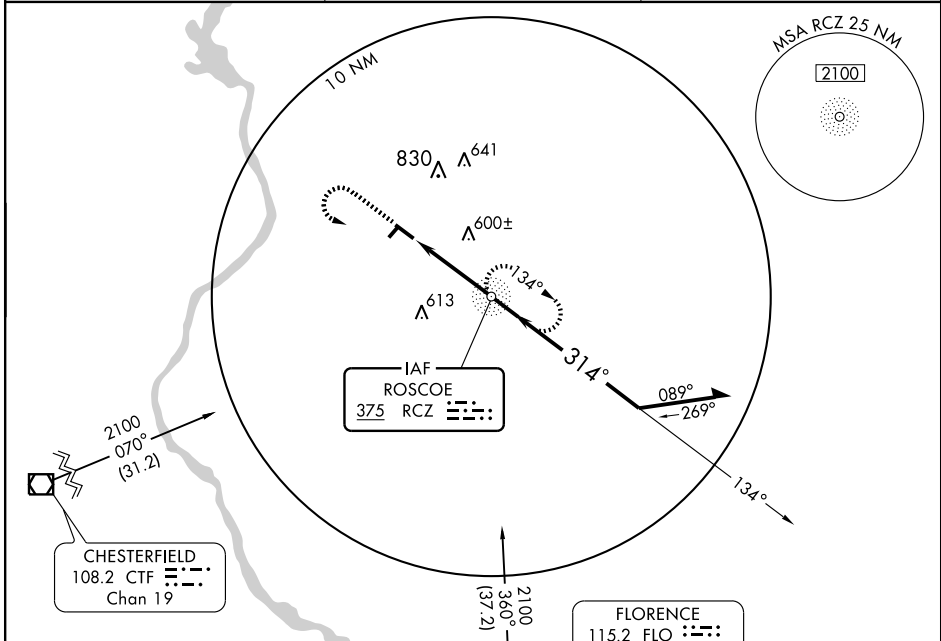
Obtain local altimeter setting on CTA; when not received, use Fayetteville Rgnl altimeter setting.

MISSED APPROACH: Climb to 1400 then climbing left turn to 2100 direct RCZ NDB and hold.

AWOS-3
118.775

FAYETTEVILLE APP CON
127.8 343.725

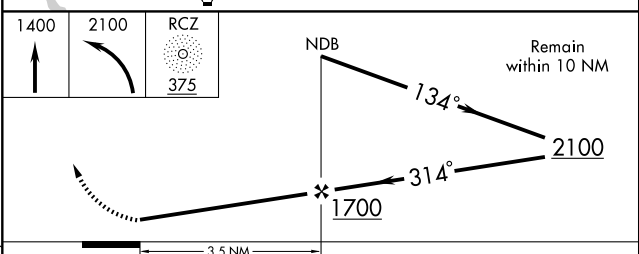
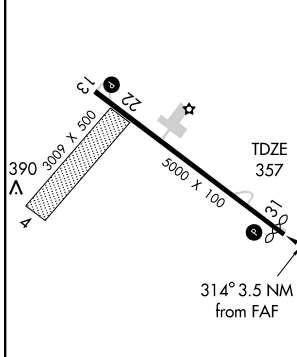
UNICOM
122.8 (CTAF)



SE-2, 22 OCT 2009 to 19 NOV 2009

SE-2, 22 OCT 2009 to 19 NOV 2009

ELEV 358 Rwy 31 ldg 4799'



REIL Rwy 31
MIRL Rwy 13-31

FAF to MAP 3.5 NM

Knots	60	90	120	150	180
Min:Sec	3:30	2:20	1:45	1:24	1:10

CATEGORY	A		B		C		D	
	S-31	960-1	603 (700-1)	960-1 ³ / ₄	603 (700-1 ³ / ₄)	960-2	603 (700-2)	960-2
CIRCLING	960-1	602 (700-1)	960-1 ³ / ₄	602 (700-1 ³ / ₄)	960-2	602 (700-2)	960-2	602 (700-2)
FAYETTEVILLE RGNL ALTIMETER SETTING MINIMUMS								
S-31	1080-1	723 (800-1)	1080-2	723 (800-2)	1080-2 ¹ / ₄	723 (800-2 ¹ / ₄)	1080-2 ¹ / ₄	723 (800-2 ¹ / ₄)
CIRCLING	1080-1	722 (800-1)	1080-2	722 (800-2)	1080-2 ¹ / ₄	722 (800-2 ¹ / ₄)	1080-2 ¹ / ₄	722 (800-2 ¹ / ₄)