

# GPS RWY 31

ROCKINGHAM/ RICHMOND COUNTY (R/CZ)

APP CRS <b>314°</b>	Rwy Idg <b>4799</b>
	TDZE <b>357</b>
	Apt Elev <b>358</b>

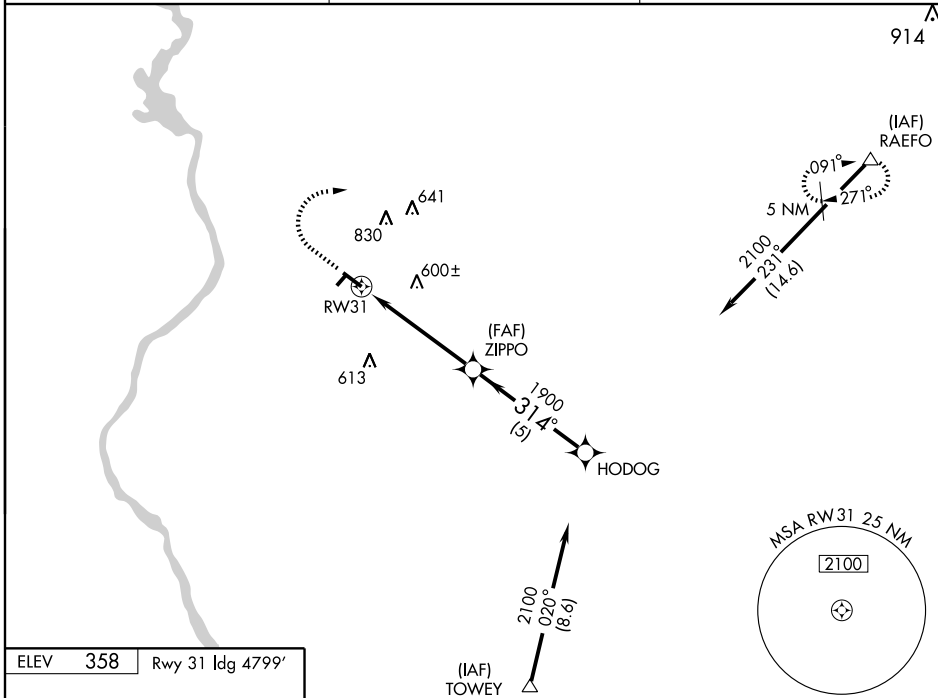
▼ Obtain local altimeter setting on CTAF; when not received, use Fayetteville Rgnl altimeter setting.

▲ MISSED APPROACH: Climb to 2400 then climbing right turn to 2400 direct RAEFO WP and hold.

AWOS-3  
**118.775**

FAYETTEVILLE APP CON  
**127.8 343.725**

UNICOM  
**122.8 (CTAF) 0**



SE-2, 22 OCT 2009 to 19 NOV 2009

SE-2, 22 OCT 2009 to 19 NOV 2009

ELEV 358 Rwy 31 Idg 4799'

REIL Rwy 31 0  
MIRL Rwy 13-31 0

1200	2400	RAEFO	HODOG	
↑	↷	▲		
RW31		ZIPPO	2100	
5 NM		5 NM	Procedure Turn NA	
CATEGORY	A	B	C	D
S-31	780-1	423 (500-1)	780-1¼	423 (500-1¼)
CIRCLING	800-1 442 (500-1)	820-1 462 (500-1)	820-1½ 462 (500-1½)	960-2 602 (700-2)
FAYETTEVILLE RGNL ALTIMETER SETTING MINIMUMS				
S-31	920-1	563 (600-1)	920-1½ 563 (600-1½)	920-1¾ 563 (600-1¾)
CIRCLING	920-1	562 (600-1)	920-1½ 562 (600-1½)	1080-2¼ 722 (800-2¼)

# GPS RWY 31