

PARIS, TENNESSEE

AL-5576 (FAA)

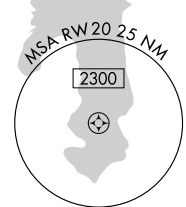
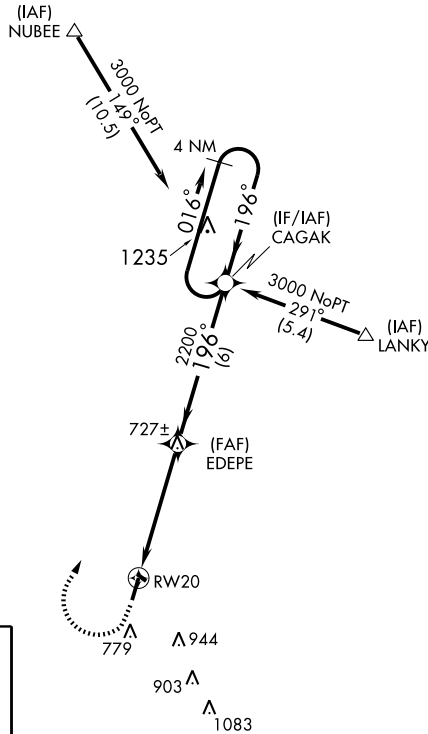
RNAV (GPS) RWY 20

PARIS / HENRY COUNTY (PHT)

APP CRS	Rwy Idg	5001
196°	TDZE	571
	Apt Elev	580

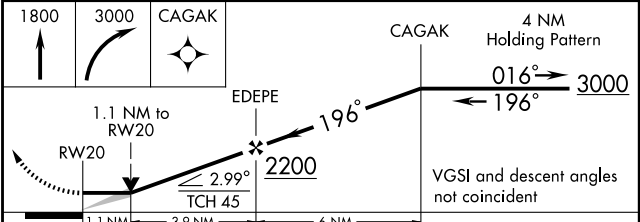
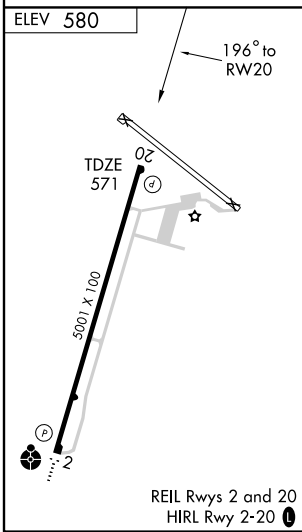
▲ NA	GPS or RNP-0.3 Required. DME/DME RNP-0.3 NA.	MISSED APPROACH: Climb to 1800 then climbing right turn to 3000 direct CAGAK WP and hold.
-------------	---	---

AWOS-3 118.825	MEMPHIS CENTER 134.65 316.15	UNICOM 123.0 (CTAF) 0
--------------------------	--	---------------------------------



SE-1, 22 OCT 2009 to 19 NOV 2009

SE-1, 22 OCT 2009 to 19 NOV 2009



CATEGORY	A	B	C	D
LNAV MDA	960-1 389 (400-1)			960-1¼ 389 (400-1¼)
CIRCLING	1080-1	500 (500-1)	1080-1½ 500 (500-1½)	1140-2 560 (600-2)

PARIS, TENNESSEE
Orig 06327

36° 20'N-88° 23'W

PARIS / HENRY COUNTY (PHT)
RNAV (GPS) RWY 20