

PARIS, TENNESSEE

AL-576 (FAA)

# ILS RWY 2

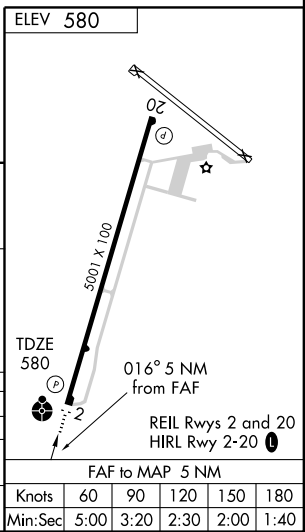
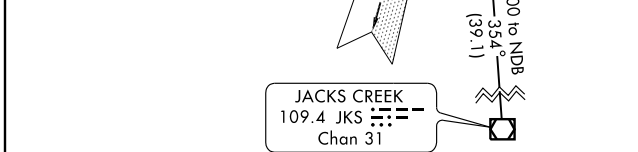
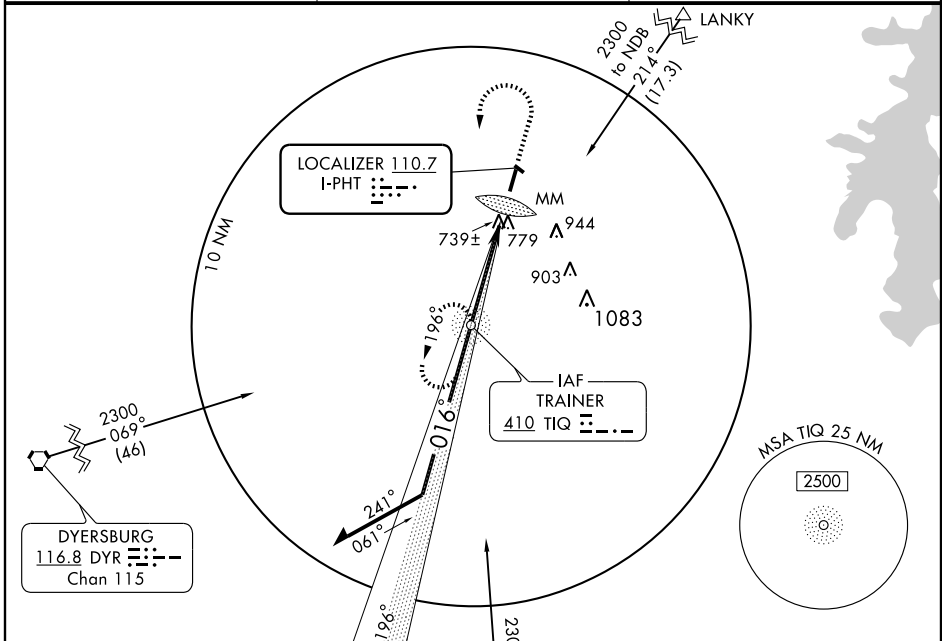
PARIS /HENRY COUNTY (PHT)

LOC I-PHT <b>110.7</b>	APP CRS <b>016°</b>	Rwy ldg <b>5001</b>
		TDZE <b>580</b>
		Apt Elev <b>580</b>

**NA** Inoperative table does not apply to S-LOC Cat C. If local altimeter setting not received, use Jackson altimeter setting and increase all MDAs 140 feet. **ADF REQUIRED.**

**ODALS** MISSED APPROACH: Climb to 1400 then climbing left turn to 2300 direct TIQ NDB and hold.

AWOS-3 <b>118.825</b>	MEMPHIS CENTER <b>134.65 316.15</b>	UNICOM <b>123.0 (CTAF) 0</b>
--------------------------	--	---------------------------------



CATEGORY	A	B	C	D
S-ILS 2		880-1	300 (300-1)	
S-LOC 2	1020-3/4	440 (500-3/4)	1020-1 1/4 440 (500-1 1/4)	1020-1 1/2 440 (500-1 1/2)
CIRCLING	1080-1	500 (500-1)	1080-1 1/2 500 (500-1 1/2)	1140-2 560 (600-2)

PARIS, TENNESSEE  
Orig-A 06327

36° 20'N-88° 23'W

PARIS /HENRY COUNTY (PHT)  
**ILS RWY 2**

SE-1, 22 OCT 2009 to 19 NOV 2009

SE-1, 22 OCT 2009 to 19 NOV 2009