

HAVRE, MONTANA

AL-5575 (FAA)

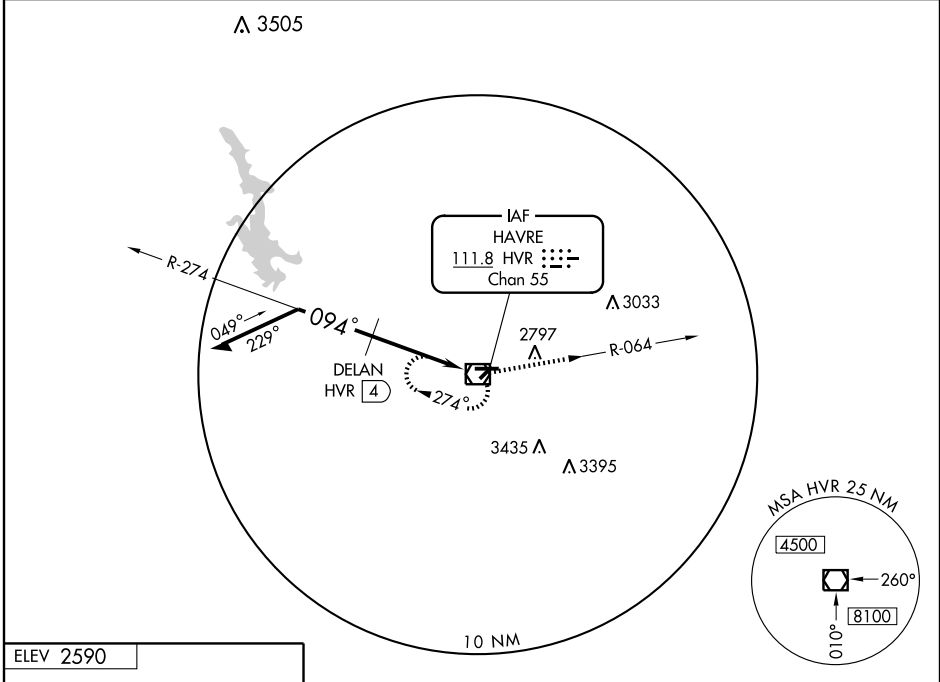
VOR/DME HVR 111.8 Chan 55	APP CRS 094°	Rwy Idg TDZE Apt Elev	5205 2583 2590
--	------------------------	-----------------------------	---

VOR or GPS RWY 7

HAVRE CITY-COUNTY (HVR)

▼ Activate MIRL Rwy 31-21 and VASI Rwy 21-CTAF.
▲ MISSED APPROACH: Climb to 4500 via R-064 then direct HVR VOR/DME and hold.

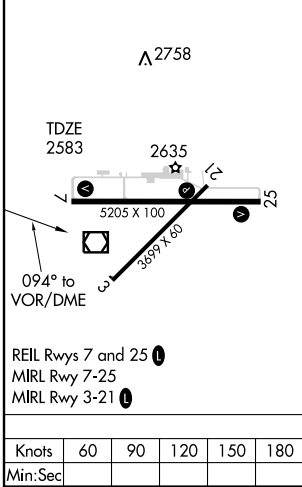
ASOS 135.225	GREAT FALLS RADIO 123.65	UNICOM 122.8 (CTAF) 0
------------------------	------------------------------------	---------------------------------



NW-1, 22 OCT 2009 to 19 NOV 2009

NW-1, 22 OCT 2009 to 19 NOV 2009

ELEV 2590



Remain within 10 NM	VOR/DME		
4500	274°	DELAN HVR (4)	3280
094°	4 NM		

CATEGORY	A	B	C	D
S-7	3280-1 697 (700-1)		3280-2 697 (700-2)	3280-2½ 697 (700-2½)
CIRCLING	3280-1 692 (700-1)		3280-2 692 (700-2)	3280-2½ 692 (700-2½)
DME MINIMUMS				
S-7	3020-1 437 (500-1)		3020-1¼ 437 (500-1¼)	3020-1½ 437 (500-1½)
CIRCLING	3060-1 472 (500-1)		3060-1½ 472 (500-1½)	3140-2 552 (600-2)

HAVRE, MONTANA
Amdt 6A 07074

48°33'N - 109°46'W

HAVRE CITY-COUNTY (HVR) VOR or GPS RWY 7