

HAVRE, MONTANA

AL-5575 (FAA)

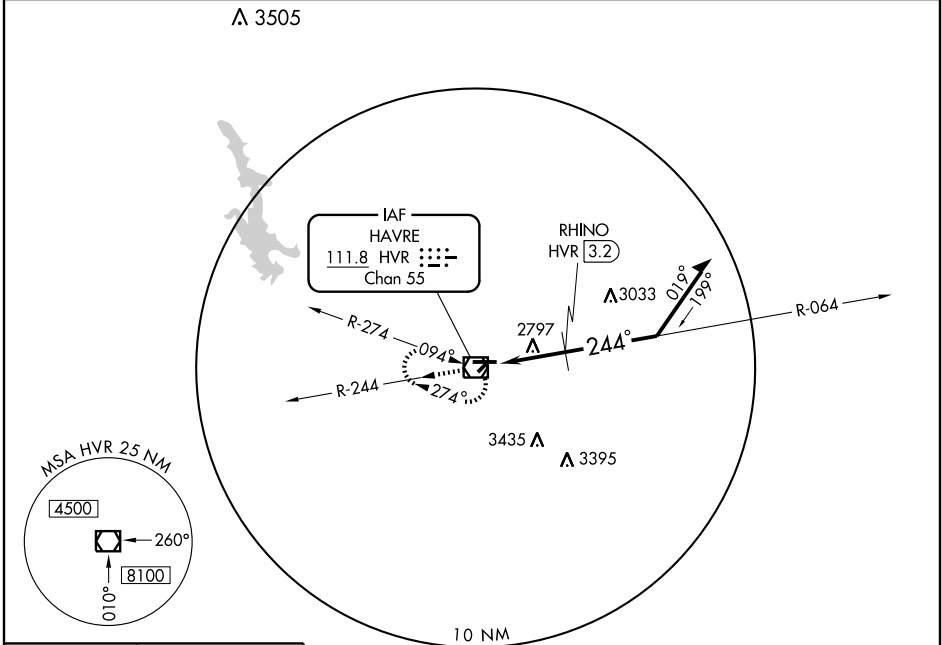
VOR/DME HVR 111.8 Chan 55	APP CRS 244°	Rwy Idg TDZE Apt Elev	5205 2584 2590
--	------------------------	-----------------------------	---

VOR or GPS RWY 25

HAVRE CITY-COUNTY (HVR)

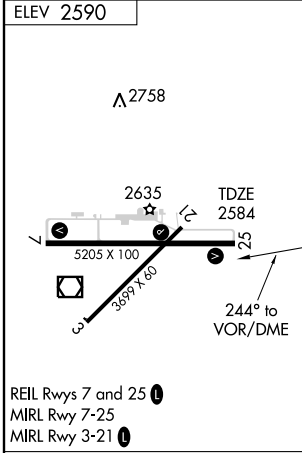
MISSSED APPROACH: Climb to 4500 via HVR R-244 then direct HVR VOR/DME and hold.

ASOS 135.225	GREAT FALLS RADIO 123.65	UNICOM 122.8 (CTAF) 1
------------------------	------------------------------------	--



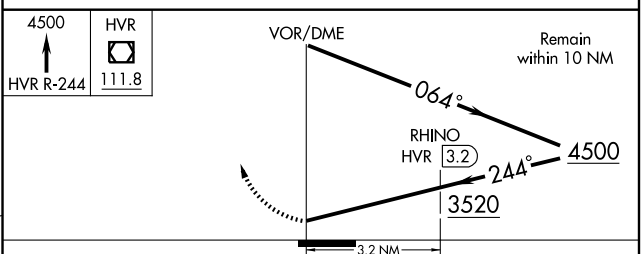
NW-1, 22 OCT 2009 to 19 NOV 2009

NW-1, 22 OCT 2009 to 19 NOV 2009



REIL Rwy 7 and 25 **1**
MIRL Rwy 7-25
MIRL Rwy 3-21 **1**

Knots	60	90	120	150	180
Min:Sec					



CATEGORY	A	B	C	D
S-25	3520-1¼	936 (1000-1¼)	3520-2¾ 936 (1000-2¾)	3520-3 936 (1000-3)
CIRCLING	3520-1¼	932 (1000-1¼)	3520-2¾ 932 (1000-2¾)	3520-3 932 (1000-3)
RHINO FIX MINIMUMS				
S-25	3060-1	476 (500-1)	3060-1¼ 476 (500-1¼)	3060-1½ 476 (500-1½)
CIRCLING	3060-1	472 (500-1)	3060-1½ 472 (500-1½)	3140-2 552 (600-2)

HAVRE, MONTANA
Amdt 8C 07074

48°33'N - 109°46'W

HAVRE CITY-COUNTY (HVR)

VOR or GPS RWY 25