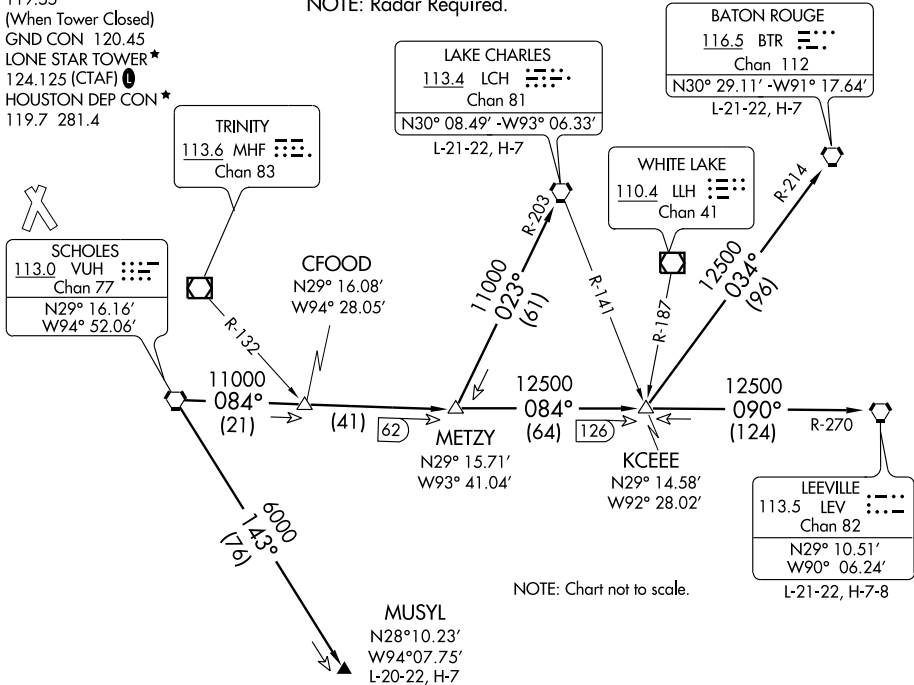


ATIS 118.325
 LONE STAR CLNC DEL
 120.45
 HOUSTON CLNC DEL
 119.55
 (When Tower Closed)
 GND CON 120.45
 LONE STAR TOWER*
 124.125 (CTAF)
 HOUSTON DEP CON*
 119.7 281.4

NOTE: LCH, BTR, and LEV transitions are ATC assigned only, do not file.
 NOTE: For LCH, BTR, LEV transitions, this procedure requires over
 water flight not to exceed 35 miles from nearest shoreline.
 NOTE: Radar Required.



NOTE: Chart not to scale.

TAKE-OFF MINIMUMS:
 Rwy 1, 14, 19, 32, standard.

(TAKE-OFF NOTES ON FOLLOWING PAGE)

DEPARTURE ROUTE DESCRIPTION

When entering controlled airspace, fly assigned heading for vectors to VUH VORTAC, maintain 4000', expect filed altitude 10 minutes after departure.

BATON ROUGE TRANSITION (VUH3.BTR): From over VUH VORTAC via VUH R-084 to KCEEE INT, then via BTR R-214 to BTR VORTAC.

LAKE CHARLES TRANSITION (VUH3.LCH): From over VUH VORTAC via VUH R-084 to METZY INT, then via LCH R-203 to LCH VORTAC.

LEEVILLE TRANSITION (VUH3.LEV): From over VUH VORTAC via VUH R-084 to KCEEE INT, then via LEV R-270 to LEV VORTAC.

MUSYL TRANSITION (VUH3.MUSYL): From over VUH VORTAC via VUH R-143 to MUSYL.