

SABINE PASS ONE DEPARTURE (RNAV)

SC-5, 22 OCT 2009 to 19 NOV 2009

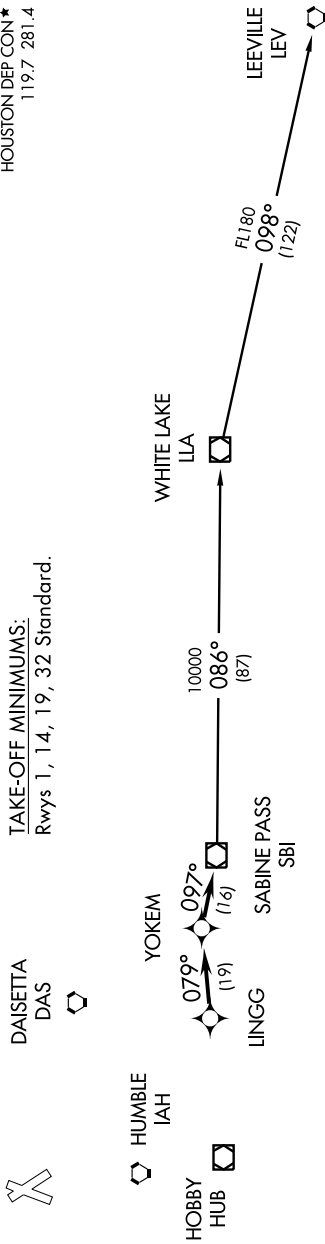
NOTE: Chart not to scale.

Note: RADAR Required.
Note: RNAV 1.

Note: DME/DME/IRU or GPS Required.
Note: For non-GPS equipped aircraft,
BPT and LCH must be operational.

TAKE-OFF MINIMUMS:
Rwys 1, 14, 19, 32 Standard.

ATIS 118.325
LONE STAR CLNC DEL 120.45
HOUSTON CLNC DEL 119.55
(When Tower Closed)
GND CON 120.45
LONE STAR TOWER ★ 124.125 (CTAF) ●
HOUSTON DEP CON ★ 119.7 281.4



DEPARTURE ROUTE DESCRIPTION

Expect vectors to LINGG, maintain 4000, then via depicted route to SBI VOR/DME, thence. . . .

. . . via (transition). Expect clearance to filed altitude/flight level 10 minutes after departure.

LEEVILLE TRANSITION: (SBI1.LEV)
WHITE LAKE TRANSITION: (SBI1.LLA)

TAKE-OFF OBSTACLES:

- Rwy 1, Multiple trees beginning 1899' from DER, 11' left of centerline, up to 80' AGL/314' MSL. Ot on glideslope 387' from DER, 404' right of centerline, 23' AGL/258' MSL. Tower 457' from DER, 387' right of centerline, 45' AGL/275' MSL. Multiple trees beginning 788' from DER, 134' right of centerline, up to 79' AGL/313' MSL.
- Rwy 14, Multiple trees beginning 1655' from DER, 408' left of centerline, up to 81' AGL/300' MSL. Ot on DME 401' from DER, 266' right of centerline, 21' AGL/255' MSL. Multiple trees beginning 1480' from DER, 80' right of centerline, up to 77' AGL/306' MSL.
- Rwy 19, Multiple trees beginning 17' from DER, 157' left of centerline, up to 95' AGL/315' MSL. Multiple trees beginning 68' from DER, 156' right of centerline, up to 80' AGL/305' MSL.
- Rwy 32, Vehicle and road 602' from DER, 551' left of centerline, 15' AGL/257' MSL. Pole 1411' from DER, 458' left of centerline, 29' AGL/268' MSL. Tree 2448' from DER, 990' right of centerline, 106' AGL/325' MSL.