

HOUSTON, TEXAS

AL-5573 (FAA)

RNAV (GPS) RWY 32

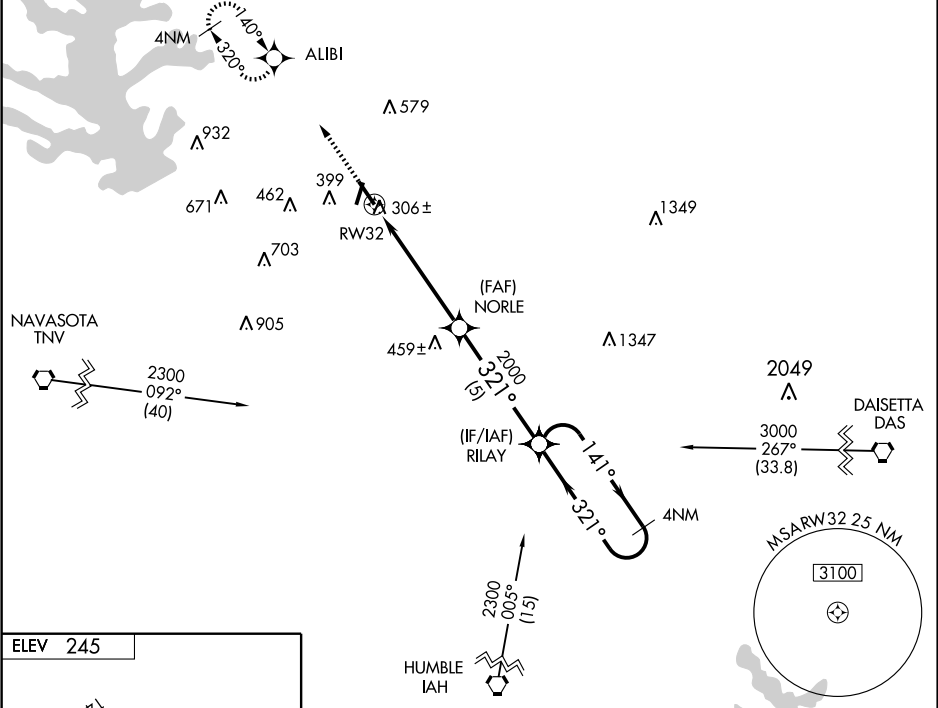
HOUSTON/LONE STAR EXECUTIVE (CXXO)

APP CRS 321°	Rwy Idg 6000
	TDZE 245
	Apt Elev 245

BARO-VNAV NA below -15°C (5°F)
NA Circling NA at night. DME/DME RNP-0.3 NA

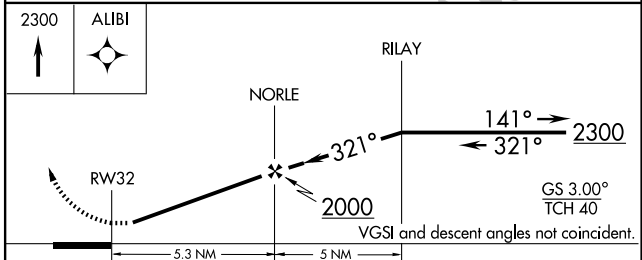
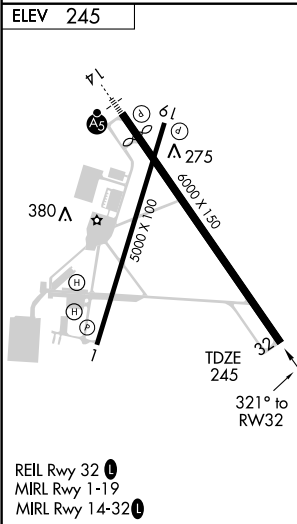
MISSED APPROACH: Climb to 2300 direct ALIBI and hold.

ATIS 118.325	HOUSTON APP CON * 119.7 281.4	LONE STAR TOWER * 124.125 (CTAF)	GN D CON 120.45	CLNC DEL 120.45	HOUSTON CLNC DEL 119.55 (When tower closed)	UNICOM 122.95
------------------------	---	--	---------------------------	---------------------------	--	-------------------------



SC-5, 22 OCT 2009 to 19 NOV 2009

SC-5, 22 OCT 2009 to 19 NOV 2009



CATEGORY	A			
GLS PA DA	NA			
LNAV/VNAV DA	640-1½ 395 (400-1½)			
LNAV MDA	660-1	415 (500-1)	660-1¼	415 (500-1¼)
CIRCLING	700-1	455 (500-1)	700-1 ½	800-2 455 (500-1½) 555 (600-2)

HOUSTON, TEXAS
 Orig-B 09239

30°21'N-95°25'W

RNAV (GPS) RWY 32