

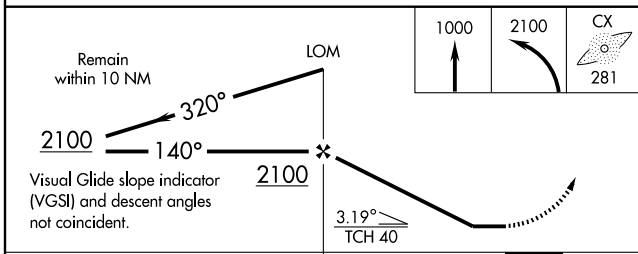
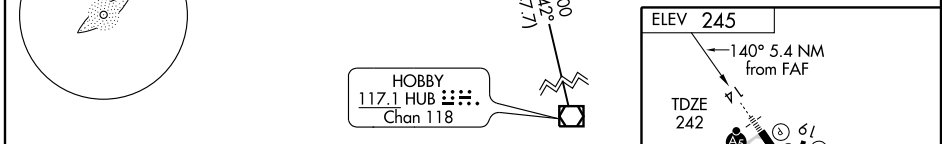
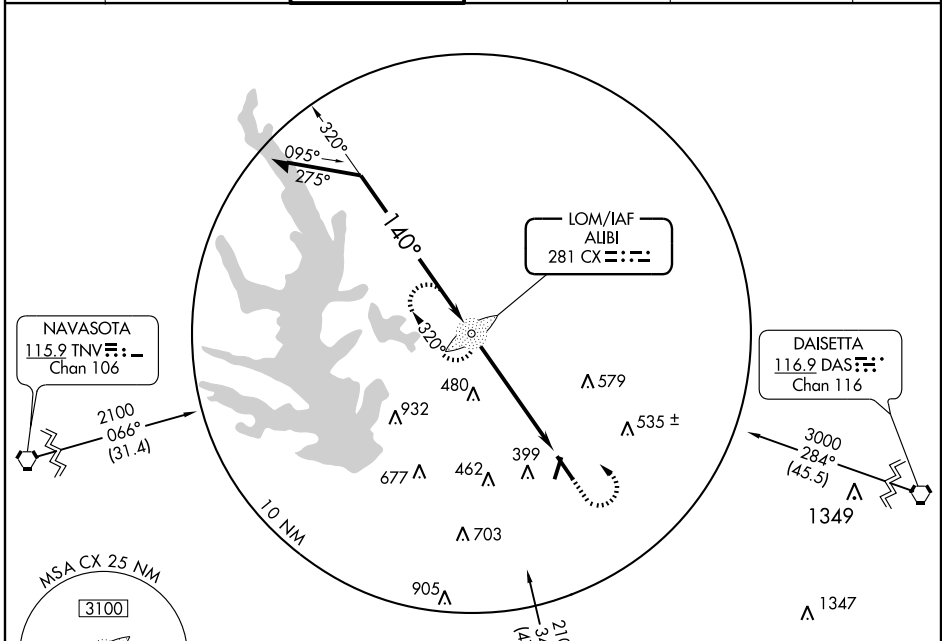
# NDB RWY 14

HOUSTON/ LONE STAR EXECUTIVE (CXO)

LOM CX <b>281</b>	APP CRS <b>140°</b>	Rwy Idg TDZE Apt Elev	<b>5409</b> <b>242</b> <b>245</b>
----------------------	------------------------	-----------------------------	---

<p>▼ Circling NA at night.</p>	<p>MALSR</p>	<p>MISSED APPROACH: Climb to 1000 then climbing left turn to 2100 direct CX LOM and hold.</p>
--------------------------------	--------------	---

ATIS <b>118.325</b>	HOUSTON APP CON * <b>119.7 281.4</b>	LONE STAR TOWER * <b>124.125</b> (CTAF)	GND CON <b>120.45</b>	CLNC DEL <b>120.45</b>	HOUSTON CLNC DEL <b>119.55</b> (When tower closed)	UNICOM <b>122.95</b>
------------------------	---	--	--------------------------	---------------------------	--	-------------------------



CATEGORY	A	B	C	D
S-14	780-¾ 538 (600-¾)		780-1 538 (600-1)	780-1½ 538 (600-1½)
CIRCLING	780-1	535 (600-1)	780-1½ 535 (600-1½)	800-2 555 (600-2)

FAF to MAP 5.4 NM					
Knots	60	90	120	150	180
Min:Sec	5:24	3:36	2:42	2:10	1:48

# NDB RWY 14

SC-5, 22 OCT 2009 to 19 NOV 2009

SC-5, 22 OCT 2009 to 19 NOV 2009