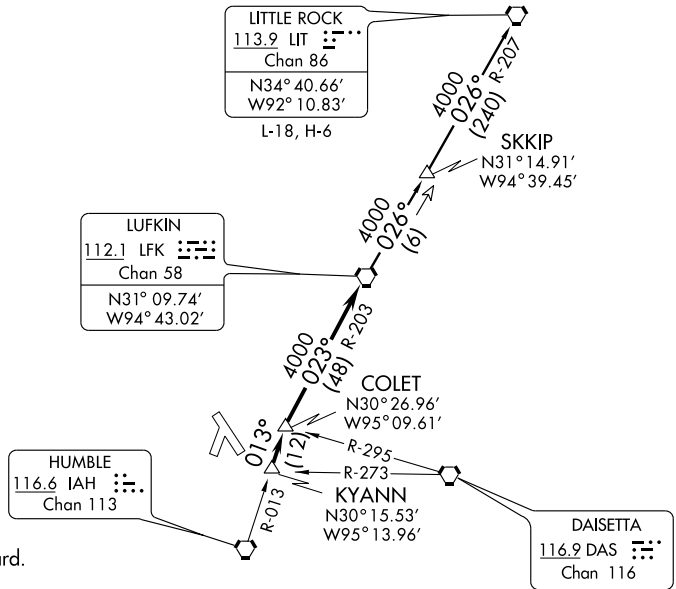


ATIS 118.325  
 LONE STAR CLNC DEL  
 120.45  
 HOUSTON CLNC DEL  
 119.55  
 (When Tower Closed)  
 GND CON 120.45  
 LONE STAR TOWER\*  
 124.125 (CTAF) 0  
 HOUSTON DEP CON\*  
 119.7 281.4



**TAKE-OFF MINIMUMS:**  
 Rwy 1, 14, 19, 32, standard.

**NOTE:** Radar Required.  
 NOTE: For aircraft destined LIT, or overflying LIT or PXV.

- TAKE-OFF OBSTACLES:**
- Rwy 1, Multiple trees beginning 1899' from DER, 11' left of centerline, up to 80' AGL/314' MSL. OL on glideslope 387' from DER, 404' right of centerline, 23' AGL/258' MSL. Tower 457' from DER, 387' right of centerline, 45' AGL/275' MSL. Multiple trees beginning 788' from DER, 134' right of centerline, up to 79' AGL/313' MSL.
  - Rwy 14, Multiple trees beginning 1655' from DER, 408' left of centerline, up to 81' AGL/300' MSL. OL on DME 401' from DER, 266' right of centerline, 21' AGL/255' MSL. Multiple trees beginning 1480' from DER, 80' right of centerline, up to 77' AGL/306' MSL.
  - Rwy 19, Multiple trees beginning 17' from DER, 157' left of centerline, up to 95' AGL/315' MSL. Multiple trees beginning 68' from DER, 156' right of centerline, up to 80' AGL/305' MSL.
  - Rwy 32, Vehicle and road 602' from DER, 551' left of centerline, 15' AGL/257' MSL. Pole 1411' from DER, 458' left of centerline, 29' AGL/268' MSL. Tree 2448' from DER, 990' right of centerline, 106' AGL/325' MSL.

NOTE: Chart not to scale.

**DEPARTURE ROUTE DESCRIPTION**

When entering controlled airspace, fly assigned heading for vectors to KYANN INT, maintain 4000', expect filed altitude 10 minutes after departure. Thence . . . . .  
 . . . . . via IAH R-013 to COLET INT, then right turn via LFK R-203 to LFK VORTAC.

**LITTLE ROCK TRANSITION (LFK5.LIT):** From over LFK VORTAC via LFK R-026 to SKKIP INT, then via LIT R-207 to LIT VORTAC.

SC-5, 22 OCT 2009 to 19 NOV 2009

SC-5, 22 OCT 2009 to 19 NOV 2009