

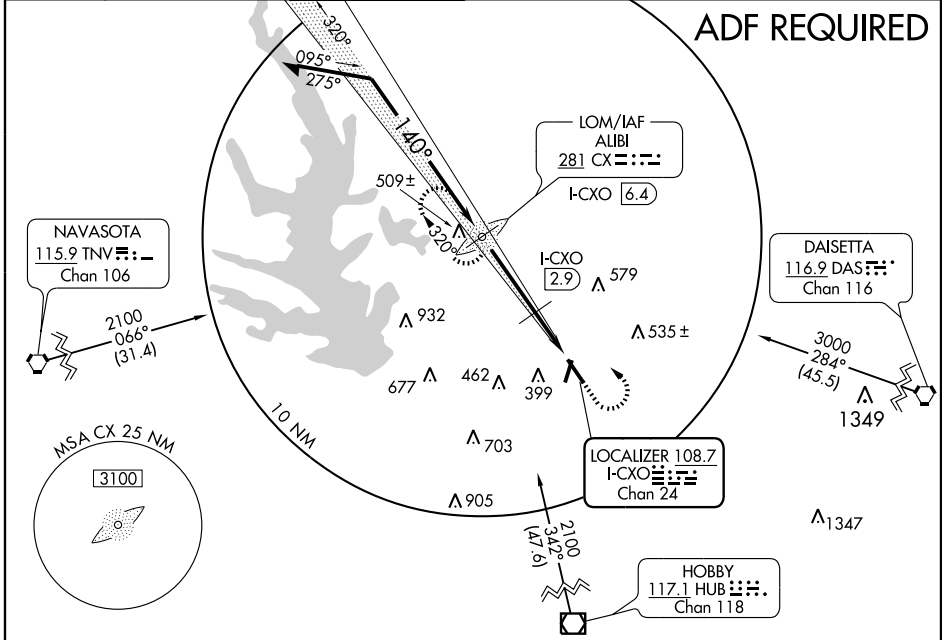
# ILS or LOC RWY 14

HOUSTON/ LONE STAR EXECUTIVE (CXO)

LOC I-CXO <b>108.7</b> Chan 24	APP CRS <b>139°</b>	Rwy Idg TDZE Apt Elev	<b>5409</b> <b>242</b> <b>245</b>
--------------------------------------	------------------------	-----------------------------	---

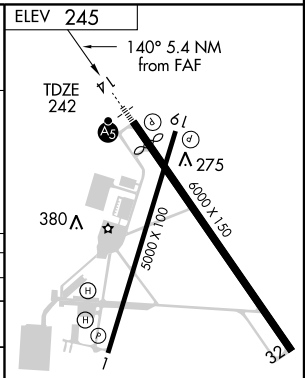
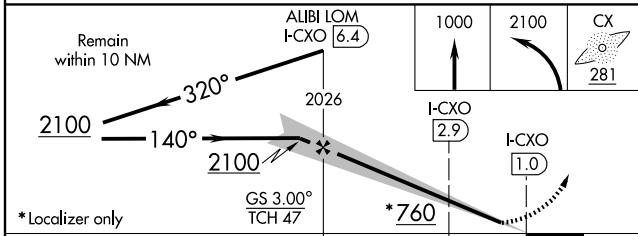
Circling NA at night.		MALSR	MISSED APPROACH: Climb to 1000 then climbing left turn to 2100 direct ALIBI LOM and hold.	
-----------------------	--	-------	---	--

ATIS <b>118.325</b>	HOUSTON APP CON * <b>119.7 281.4</b>	LONE STAR TOWER * <b>124.125</b> (CTAF)	GND CON <b>120.45</b>	CLNC DEL <b>120.45</b>	HOUSTON CLNC DEL <b>119.55</b> (When tower closed)	UNICOM <b>122.95</b>
------------------------	---	--	--------------------------	---------------------------	--	-------------------------



SC-5, 22 OCT 2009 to 19 NOV 2009

SC-5, 22 OCT 2009 to 19 NOV 2009



CATEGORY	A	B	C	D
S-ILS 14	442-½ 200 (200-½)			
S-LOC 14	760-½ 518 (600-½)	760-1 518 (600-1)	760-1½ 518 (600-1½)	760-2 518 (600-2)
CIRCLING	760-1 515 (600-1)	760-1½ 515 (600-1½)	760-2 515 (600-2)	800-2 555 (600-2)
DME MINIMUMS				
S-LOC 14	640-½ 398 (400-½)		640-¾ 398 (400-¾)	
CIRCLING	700-1 455 (500-1)	700-1½ 455 (500-1½)	800-2 555 (600-2)	

REIL Rwy 32					
MIRL Rwy 1-19					
MIRL Rwy 14-32					
FAF to MAP 5.4 NM					
Knots	60	90	120	150	180
Min:Sec	5:24	3:36	2:42	2:10	1:48