

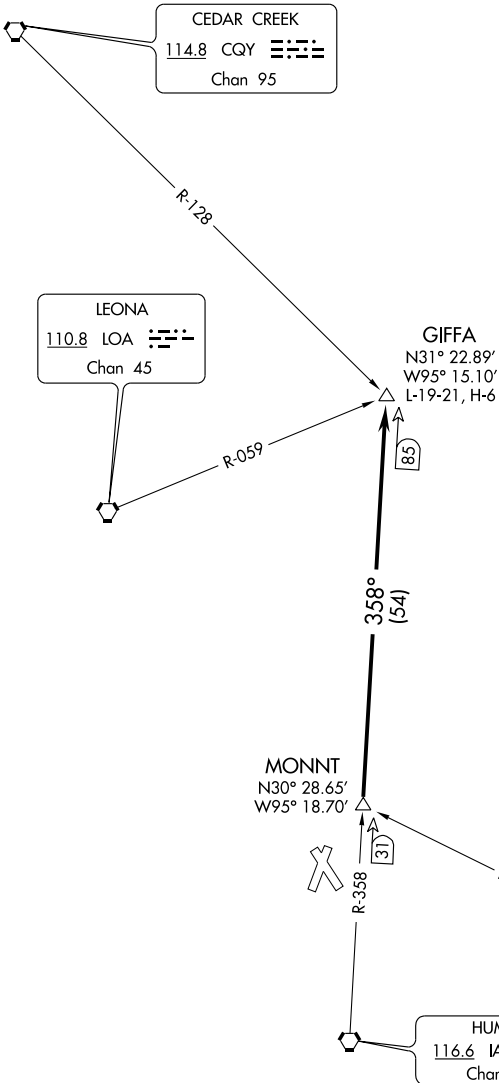
GIFFA THREE DEPARTURE

SL-5573 (FAA)

HOUSTON/ LONE STAR EXECUTIVE (C'XO)

HOUSTON, TEXAS

ATIS 118.325
 LONE STAR CLNC DEL 120.45
 HOUSTON CLNC DEL 119.55
 (When Tower Closed)
 GND CON 120.45
 LONE STAR TOWER * 124.125 (CTAF) ①
 HOUSTON DEP CON * 119.7 281.4



SC-5, 22 OCT 2009 to 19 NOV 2009

SC-5, 22 OCT 2009 to 19 NOV 2009

NOTE: Radar Required.

NOTE: Chart not to scale.

(NARRATIVE ON FOLLOWING PAGE)

TAKE-OFF MINIMUMS:
All rwys, standard.

GIFFA THREE DEPARTURE