

(ELD1.ELD) 09239

# EL DORADO ONE DEPARTURE

SL-5573 (FAA)

HOUSTON/ LONE STAR EXECUTIVE (CXXO)  
HOUSTON, TEXAS

ATIS 118.325  
LONE STAR CLNC DEL  
120.45  
HOUSTON CLNC DEL  
119.55  
(When Tower Closed)  
GND CON 120.45  
LONE STAR TOWER\*  
124.125 (CTAF) 0  
HOUSTON DEP CON\*  
119.7 281.4

EL DORADO  
115.5 ELD :---  
Chan 102  
N33°15.37' - W92°44.64'  
L-17, H-6

NOTE: Radar required.  
NOTE: For aircraft destined MEM,  
or filed via Q32 or J42.

LUFKIN  
112.1 LFK :---  
Chan 58

R-066

R-082

ENJOY  
N31°16.73'  
W94°19.82'

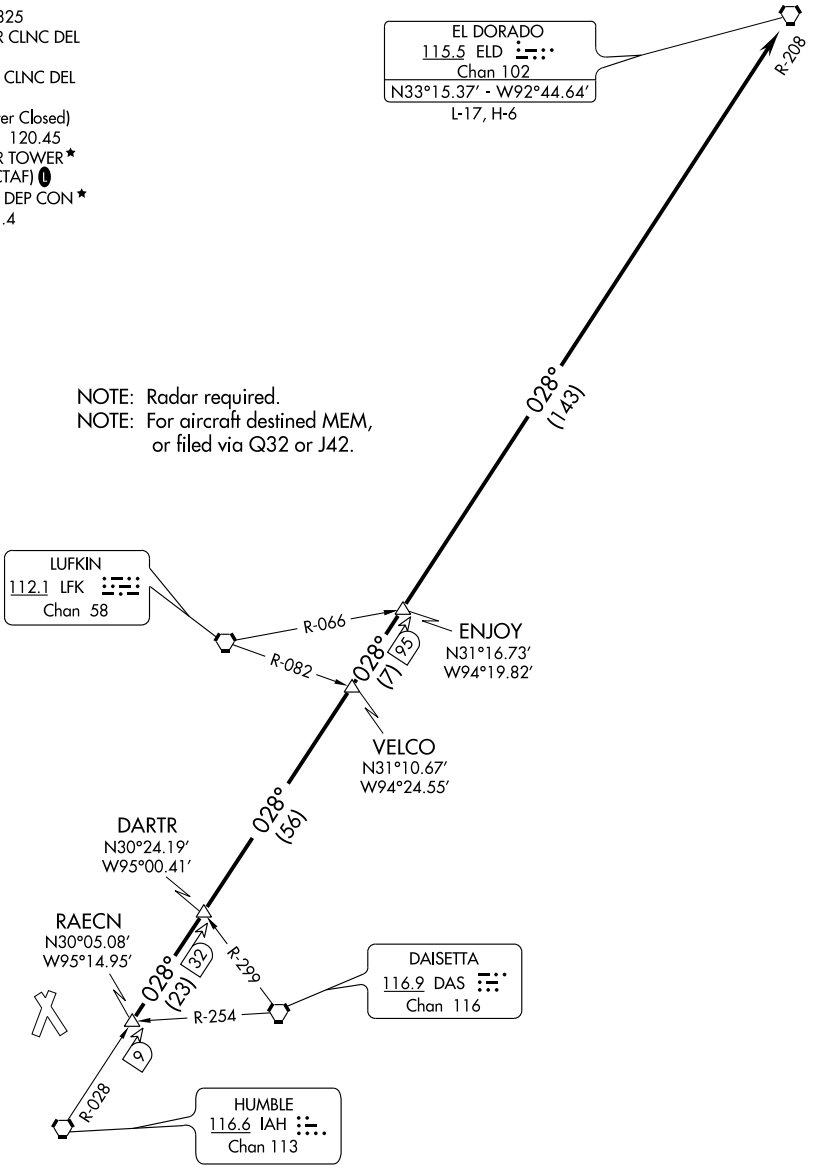
VELCO  
N31°10.67'  
W94°24.55'

DARTR  
N30°24.19'  
W95°00.41'

RAECN  
N30°05.08'  
W95°14.95'

DAISETTA  
116.9 DAS :---  
Chan 116

HUMBLE  
116.6 IAH :---  
Chan 113



SC-5, 22 OCT 2009 to 19 NOV 2009

SC-5, 22 OCT 2009 to 19 NOV 2009

NOTE: Chart not to scale.

TAKE-OFF MINIMUMS:  
All rwys, standard.

(NARRATIVE ON FOLLOWING PAGE)

# EL DORADO ONE DEPARTURE

(ELD1.ELD) 09239

HOUSTON, TEXAS  
HOUSTON/ LONE STAR EXECUTIVE (CXXO)