

CAMDEN, ARKANSAS

AL-5572 (FAA)

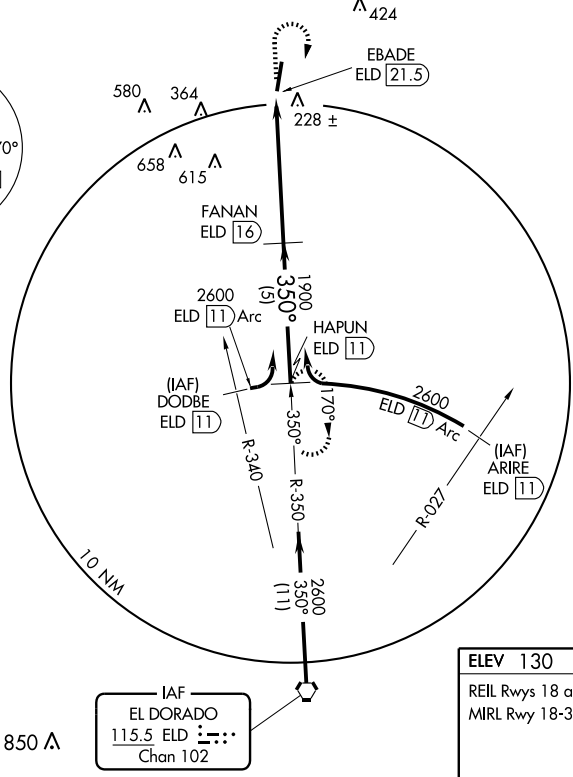
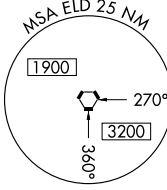
VORTAC ELD <b>115.5</b> Chan <b>102</b>	APP CRS <b>350°</b>	Rwy Idg TDZE <b>124</b> Apt Elev <b>130</b>
---	------------------------	---

# VOR/DME RWY 36

CAMDEN/HARRELL FIELD (CDH)

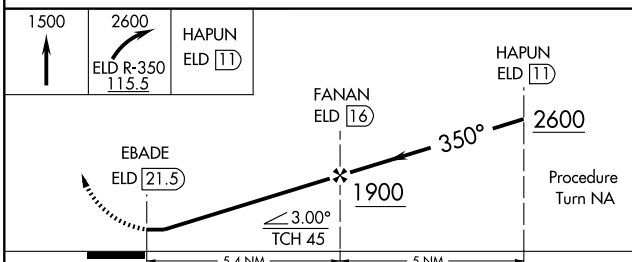
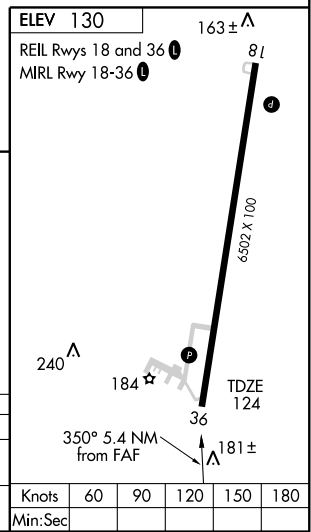
**▲ NA** Use El Dorado altimeter setting. MISSED APPROACH: Climb to 1500, then climbing right turn to 2600 via ELD R-350 to HAPUN 11 DME and hold.

AWOS-3 <b>125.2</b>	FORT WORTH CENTER <b>128.2 269.1</b>	UNICOM <b>122.7 (CTAF) 0</b>
------------------------	---	---------------------------------



SC-1, 22 OCT 2009 to 19 NOV 2009

SC-1, 22 OCT 2009 to 19 NOV 2009



CATEGORY	A	B	C	D
S-36	880-1 756 (800-1)	880-1¼ 756 (800-1¼)	880-2¼ 756 (800-2¼)	880-2½ 756 (800-2½)
CIRCLING	880-1 750 (800-1)	880-1¼ 750 (800-1¼)	880-2 ¼ 750 (800-2¼)	880-2½ 750 (800-2½)

CAMDEN, ARKANSAS  
Amdt 9 09015

33°37' N-92°46' W

CAMDEN/HARRELL FIELD (CDH)  
**VOR/DME RWY 36**

Knots	60	90	120	150	180
Min:Sec					