

# TAYLOR TWO ARRIVAL (TAY.TAY2)

ST-5570 (FAA)

JACKSONVILLE, FLORIDA

SE-3, 22 OCT 2009 to 19 NOV 2009

**SEMINOLE TRANSITION (SZW.TAY2):** From over SZW VORTAC via SZW R-089 and TAY R-275 to TAY VORTAC. Thence. . . .

. . . . From over TAY VORTAC via TAY R-070 to CROKR INT, thence to the CRG VORTAC via CRG R-301. Expect radar vectors to final approach course after CROKR INT.

SEMINOLE  
117.5 SZW  
Chen 122  
N30° 33.37' - W84° 22.44'  
L-21-22, H-8

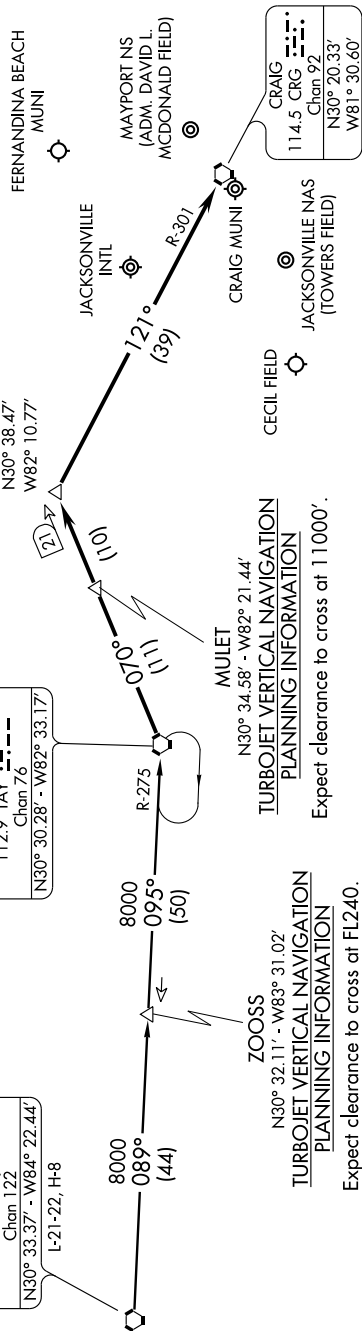
TAYLOR  
112.9 TAY  
Chen 7.6  
N30° 30.28' - W82° 33.17'

CROKR  
N30° 38.47'  
W82° 10.77'

ZOOSS  
N30° 32.11' - W83° 31.02'  
TURBOJET VERTICAL NAVIGATION  
PLANNING INFORMATION  
Expect clearance to cross at FL240.

MULET  
N30° 34.58' - W82° 21.44'  
TURBOJET VERTICAL NAVIGATION  
PLANNING INFORMATION  
Expect clearance to cross at 11000'.

CRAIG  
114.5 CRG  
Chen 92  
N30° 20.33'  
W81° 30.60'



# TAYLOR TWO ARRIVAL (TAY.TAY2)

JACKSONVILLE, FLORIDA

NOTE: DME Required.  
NOTE: Chart not to scale.

SE-3, 22 OCT 2009 to 19 NOV 2009