


# RNAV (GPS) RWY 25

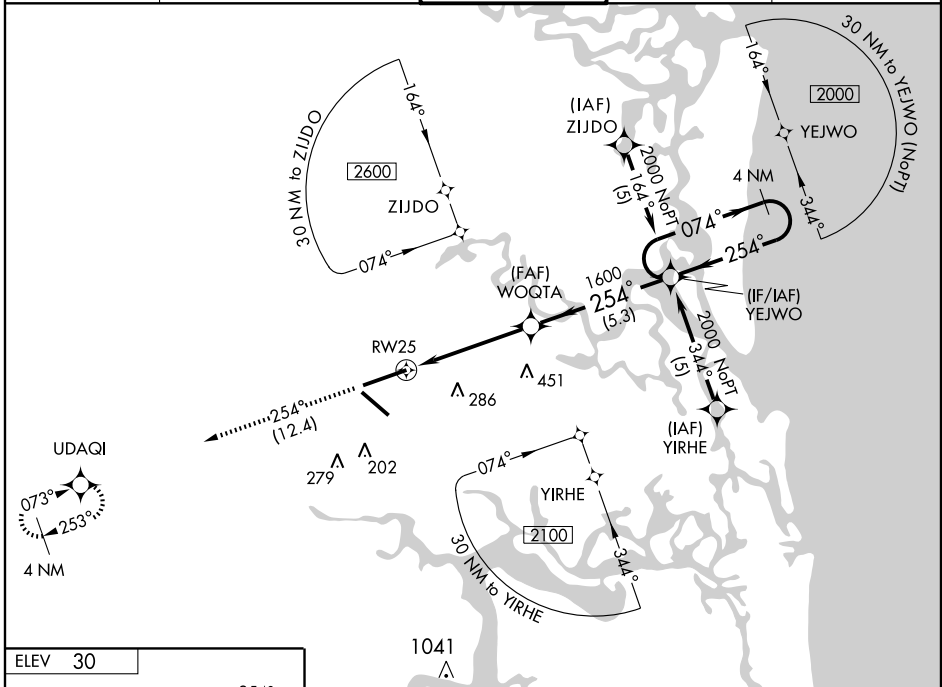
JACKSONVILLE INTL (JAX)

APP CRS <b>254°</b>	Rwy ldg <b>10000</b>
	TDZE <b>27</b>
	Apt Elev <b>30</b>

**⚠** For inoperative MALSR increase all LNAV/VNAV visibilities to RVR 6000. Baro-VNAV NA below -15°C (5°F).  
**⚠** NA ASR GPS or RNP-0.3 Required. DME/DME RNP-0.3 NA.

**MALSR**  
 MISSED APPROACH: Climb to 2000 via 254° course to UDAQI WP and hold

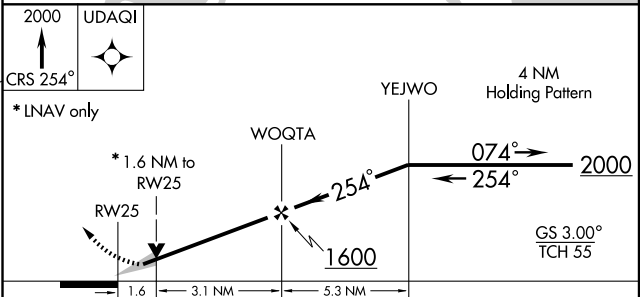
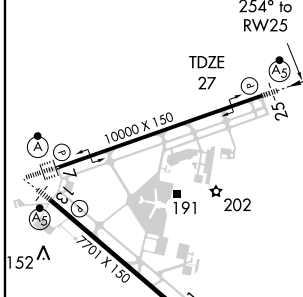
ATIS <b>125.85</b>	JACKSONVILLE APP CON <b>119.0 335.6</b>	JACKSONVILLE TOWER <b>118.3 317.7</b>	GND CON <b>121.9 348.6</b>	CLNC DEL <b>119.5 290.275</b>
-----------------------	--	--	-------------------------------	----------------------------------



SE-3, 22 OCT 2009 to 19 NOV 2009

SE-3, 22 OCT 2009 to 19 NOV 2009

ELEV 30
---------



CATEGORY	A	B	C	D
GLS DA	NA			
LNAV/VNAV DA	380/40 353 (400-¾)			
LNAV MDA	600/24	573 (600-½)	600/50 573 (600-1)	600/60 573 (600-1¼)
CIRCLING	600-1¼	570 (600-1¼)	600-1½ 570 (600-½)	640-2 610 (700-2)

REIL Rwy 31  
 TDZ/CL Rws 7, 25 and 13  
 HIRL Rws 7-25 and 13-31