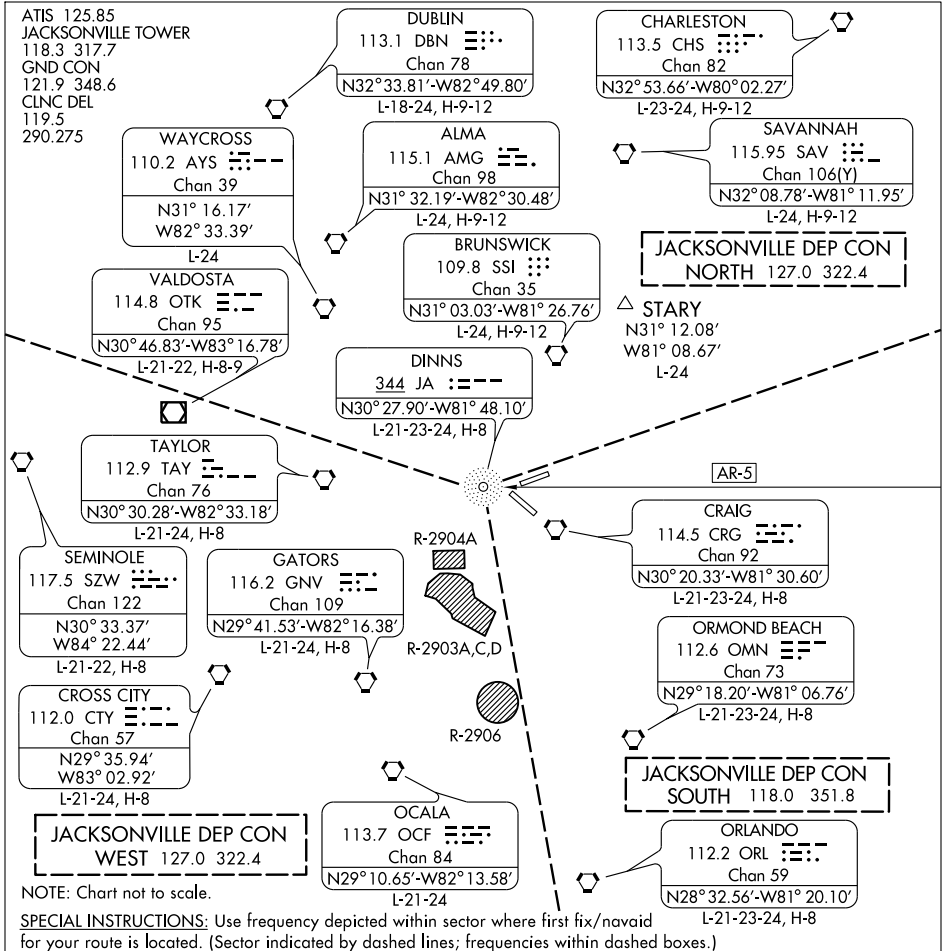


JACKSONVILLE FOUR DEPARTURE



SE-3, 22 OCT 2009 to 19 NOV 2009

SE-3, 22 OCT 2009 to 19 NOV 2009

DEPARTURE ROUTE DESCRIPTION

TAKE-OFF ALL RUNWAYS: All aircraft cleared as filed, maintain 3,000 feet or assigned altitude. Expect clearance to requested altitude/flight level ten minutes after departure.

SPECIAL TAKE-OFF INSTRUCTIONS:

RUNWAYS 7/13: Departing north/west departure control area, fly heading 070° or as assigned. Departure frequency 127.0/322.4.

RUNWAYS 7/13: Departing south departure control area, fly heading 130° or as assigned. Departure frequency 118.0/351.8.

RUNWAYS 25/31: Departing north departure control area, fly heading 310° or as assigned. Departure frequency 127.0/322.4.

RUNWAYS 25/31: Departing west departure control area, fly heading 250° or as assigned. Departure frequency 127.0/322.4.

RUNWAYS 25/31: Departing south departure control area, fly heading 220° or as assigned. Departure frequency 118.0/351.8.

JACKSONVILLE FOUR DEPARTURE