

JACKSONVILLE, FLORIDA

AL-5570 (FAA)

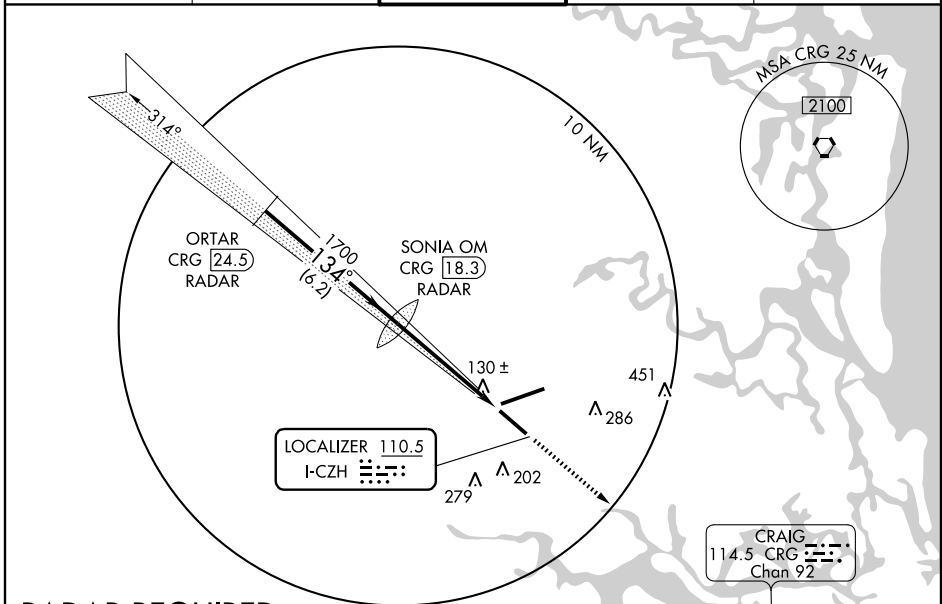
ILS RWY 13

JACKSONVILLE INTL (JAX)

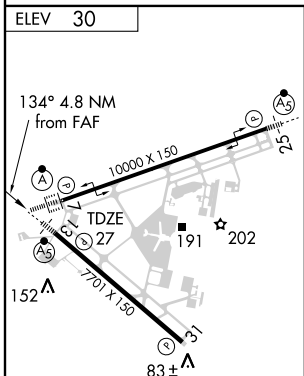
LOC I-CZH 110.5	APP CRS 134°	Rwy ldg 7701
		TDZE 27
		Apt Elev 30

		MISSED APPROACH: Climb to 2000 direct CRG VORTAC and hold.		
		ATIS 125.85	JACKSONVILLE APP CON 119.0 335.6	JACKSONVILLE TOWER 118.3 317.7

ATIS 125.85	JACKSONVILLE APP CON 119.0 335.6	JACKSONVILLE TOWER 118.3 317.7	GND CON 121.9 348.6	CLNC DEL 119.5 290.275
-----------------------	--	--	-------------------------------	----------------------------------



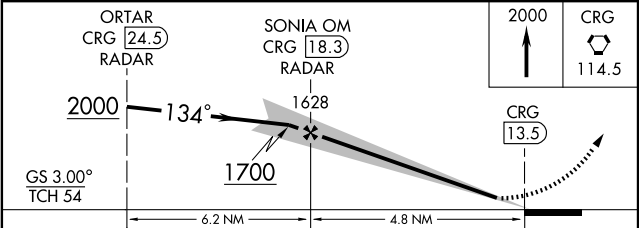
RADAR REQUIRED



REIL Rwy 31
 TDZ/CL Rwy 7, 25 and 13
 HIRL Rwy 7-25 and 13-31

FAF to MAP 4.8 NM

Knots	60	90	120	150	180
Min:Sec	4:48	3:12	2:24	1:55	1:36



CATEGORY	A	B	C	D
S-ILS 13	227-½ 200 (200-½)			
S-LOC 13	380-½ 353 (400-½)			380-1 353 (400-1)
CIRCLING	520-1	490 (500-1)	520-1½ 490 (500-1½)	640-2 610 (700-2)

JACKSONVILLE, FLORIDA
 Amdt 6A 08269

30° 30' N-81° 41' W

JACKSONVILLE INTL (JAX)
ILS RWY 13

SE-3, 22 OCT 2009 to 19 NOV 2009

SE-3, 22 OCT 2009 to 19 NOV 2009