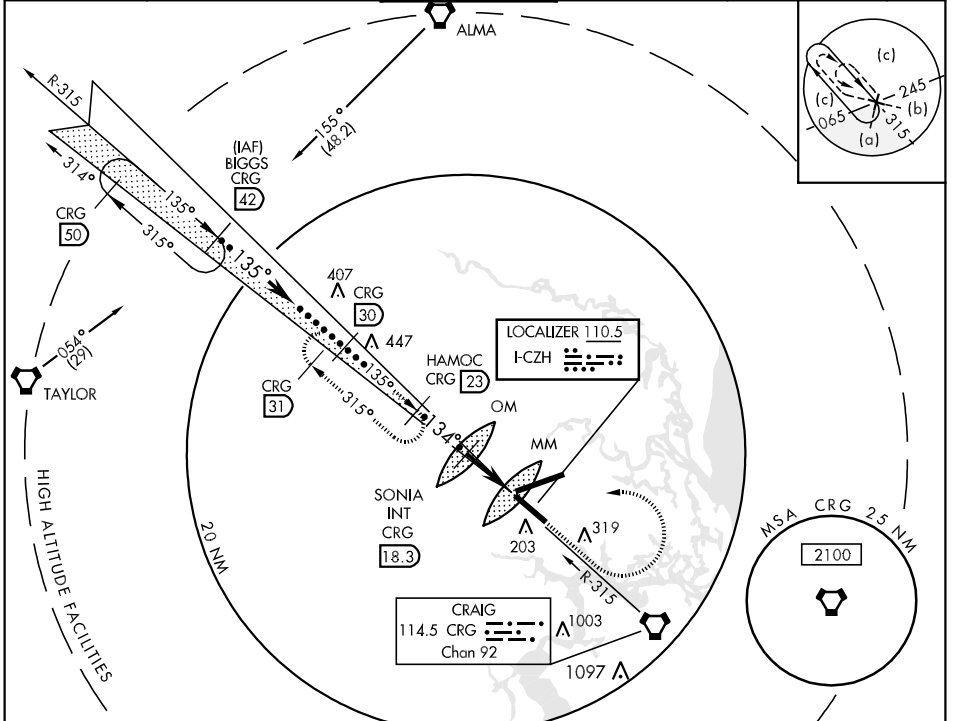


LOC I-CZH <b>110.5</b>	APCH CRS <b>134°</b>	Rwy Idg TDZE 7701 27 Arpt Elev 30	JAL-5570 [USAF]	JACKSONVILLE INTL (KJAX)
---------------------------	-------------------------	---	-----------------	--------------------------



MISSED APPROACH: Climb to 2000 then climbing left turn to 4000 via CRG R-315 to HAMOC 23 DME and hold.

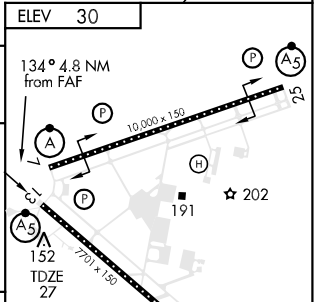
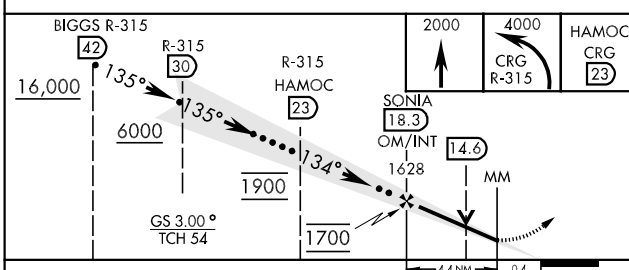
ATIS <b>125.85</b>	JACKSONVILLE APP CON <b>119.0 335.6</b>	JACKSONVILLE TOWER <b>118.3 317.7</b>	GND CON <b>121.9 348.6</b>	CLNC DEL <b>119.5 290.275</b>	ASR
-----------------------	--	--	-------------------------------	----------------------------------	-----



SE-3, 22 OCT 2009 to 19 NOV 2009

SE-3, 22 OCT 2009 to 19 NOV 2009

EMERG SAFE ALT 100 NM 2800



CATEGORY	C	D	E
S-ILS 13	227-1/2	200 (200-1/2)	
S-LOC 13	380-1/2 353 (400-1/2)	380-3/4	353 (400-3/4)
CIRCLING	520-1 1/2 490 (500-1 1/2)	640-2 610 (700-2)	820-2 3/4 790 (800-2 3/4)

REIL Rwy 31 TDZL/CL Rwy 7-25, 13 HIRL Rwy 7-25, 13-31	FAF to MAP 4.4 NM					
	Knots	120	140	160	180	200
	Min:Sec	2:12	1:53	1:39	1:28	1:19