

# BRUNSWICK THREE ARRIVAL (SSI.SS13)

ST-5570 (FAA)

JACKSONVILLE INTL  
JACKSONVILLE, FLORIDA

JACKSONVILLE APP CON  
127.0 322.4  
CECIL FIELD ATIS  
125.275  
JACKSONVILLE INTL ATIS  
125.85

CHARLESTON  
113.5 CHS  
Chan 82  
N32°53.66' - W80°02.27'  
L-23-24, H-9-12

SAVANNAH  
115.95 SAV  
Chan 106 (Y)  
N32°08.78' - W81°11.95'  
L-24, H-9-12

ANKOR  
N31°51.57' - W81°12.23'  
TURBOJET VERTICAL NAVIGATION  
PLANNING INFORMATION  
Expect clearance to cross at FL240.

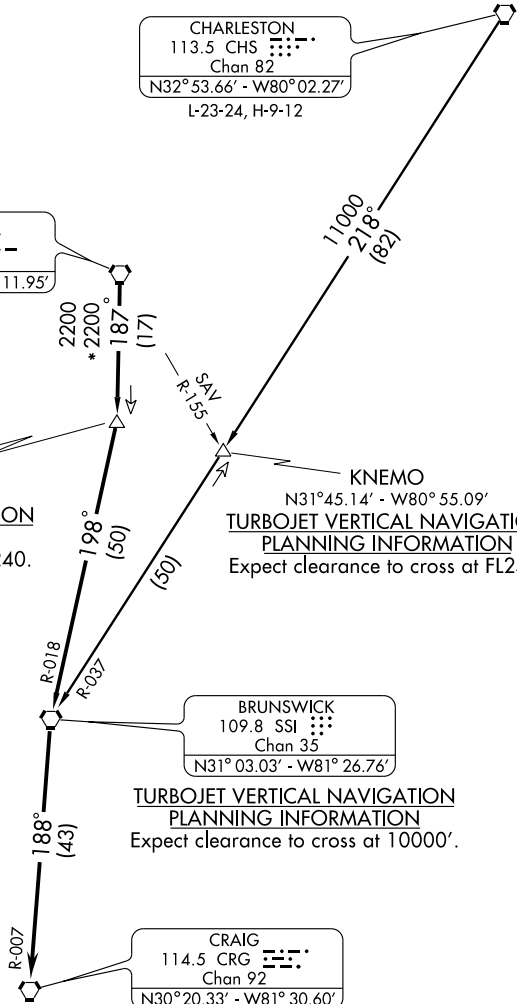
KNEMO  
N31°45.14' - W80°55.09'  
TURBOJET VERTICAL NAVIGATION  
PLANNING INFORMATION  
Expect clearance to cross at FL240.

BRUNSWICK  
109.8 SSI  
Chan 35  
N31°03.03' - W81°26.76'

TURBOJET VERTICAL NAVIGATION  
PLANNING INFORMATION  
Expect clearance to cross at 10000'.

CRAIG  
114.5 CRG  
Chan 92  
N30°20.33' - W81°30.60'

JACKSONVILLE INTL



NOTE: Chart not to scale.

CHARLESTON TRANSITION (CHS.SS13): From over CHS VORTAC via CHS R-218 and SSI R-037 to SSI VORTAC. Thence. . .

SAVANNAH TRANSITION (SAV.SS13): From over SAV VORTAC via SAV R-187 and SSI R-018 to SSI VORTAC. Thence. . .

. . . From over SSI VORTAC via SSI R-188 and CRG R-007 to CRG VORTAC. Expect radar vectors to final approach after SSI VORTAC.

# BRUNSWICK THREE ARRIVAL (SSI.SS13)

JACKSONVILLE, FLORIDA  
JACKSONVILLE INTL

SE-3, 22 OCT 2009 to 19 NOV 2009

SE-3, 22 OCT 2009 to 19 NOV 2009