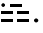


JACKSONVILLE APP CON
 127.0 322.4
 CECIL FIELD ATIS
 125.275
 CRAIG MUNI ATIS
 125.4
 JACKSONVILLE INTL ATIS
 125.85
 JACKSONVILLE NAS ATIS
 281.0
 MAYPORT NS ATIS★
 267.6

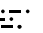
ALMA
 115.1 AMG 
 Chan 98
 N31°32.19' - W82°30.49'
 L-24, H-9-12

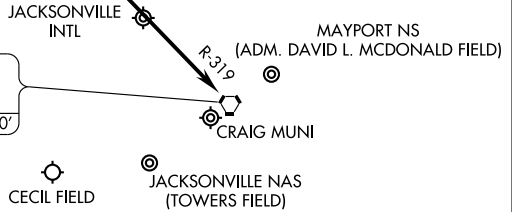
OHDEA
 N30°59.22' - W82°14.14'
TURBOJET VERTICAL NAVIGATION
PLANNING INFORMATION

Jacksonville Intl landing East: Expect clearance to cross at 12000' and 250K IAS.
 Jacksonville Intl landing West: Expect clearance to cross at 12000'.

10000
 137°
 (39)

8000
 139°
 (54)

CRAIG
 114.5 CRG 
 Chan 92
 N30°20.33' - W81°30.60'



NOTE: DME Required.

NOTE: Chart not to scale.

ARRIVAL DESCRIPTION

From over ALMA VORTAC via AMG R-157 to OHDEA INT, then via CRG R-319 to CRG VORTAC. Expect radar vectors to final approach course.

SE-3, 22 OCT 2009 to 19 NOV 2009

SE-3, 22 OCT 2009 to 19 NOV 2009