

# RNAV (GPS) RWY 31

JACKSON MUNI (MJQ)

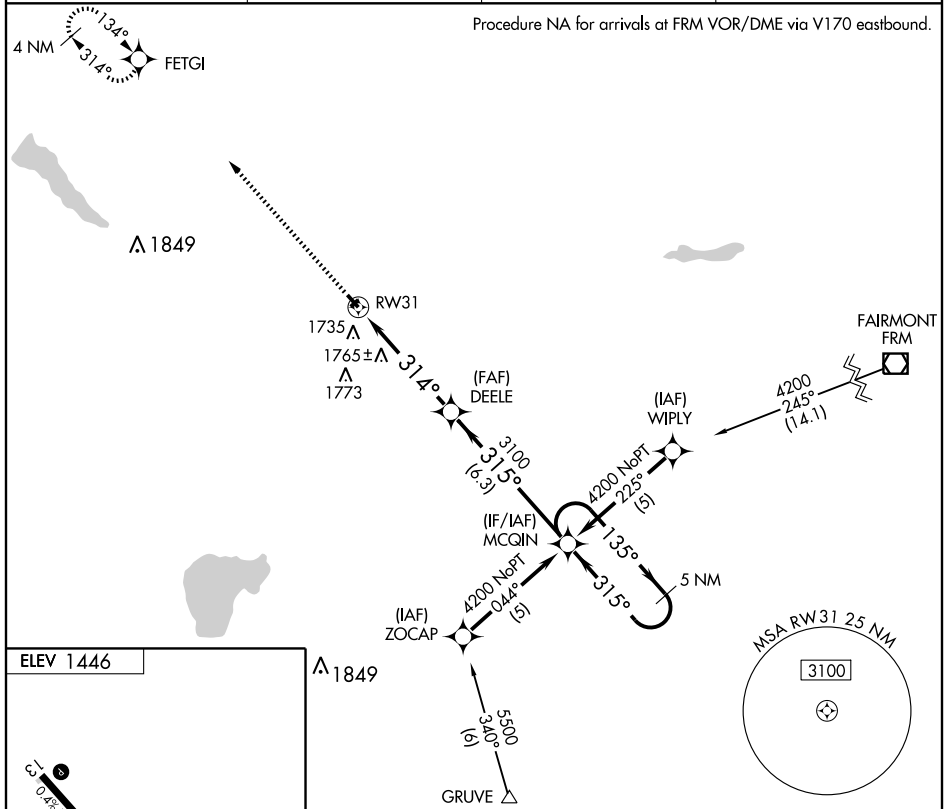
APP CRS <b>314°</b>	Rwy Idg <b>3591</b>
	TDZE <b>1445</b>
	Apt Elev <b>1446</b>

**⚠** DME/DME RNP -0.3 NA.  
**⚠** When local altimeter setting not received, use Estherville altimeter setting and increase all MDAs 60 feet and visibility Cat C ¼ mile.

**MISSED APPROACH:** Climb to 3100 direct FETGI and hold.

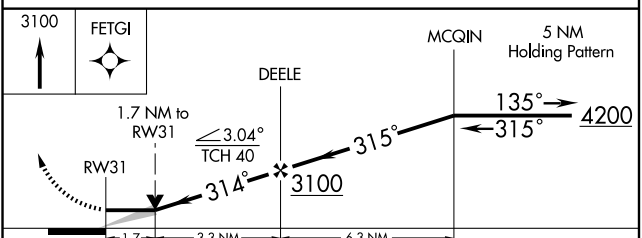
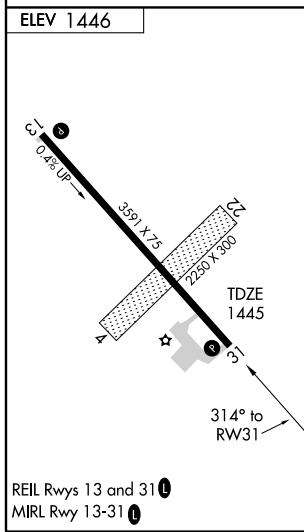
AWOS-3 <b>353</b>	MINNEAPOLIS CENTER <b>127.75 257.7</b>	GCO <b>121.725</b>	UNICOM <b>122.8 (CTAF)</b>
----------------------	---	-----------------------	-------------------------------

Procedure NA for arrivals at FRM VOR/DME via V170 eastbound.



NC-1, 22 OCT 2009 to 19 NOV 2009

NC-1, 22 OCT 2009 to 19 NOV 2009



CATEGORY	A	B	C	D
LNAV MDA	2020-1	575 (600-1)	2020-1½ 575 (600-1½)	NA
CIRCLING	2040-1	594 (600-1)	2040-1½ 594 (600-1½)	NA