

# RNAV (GPS) RWY 13

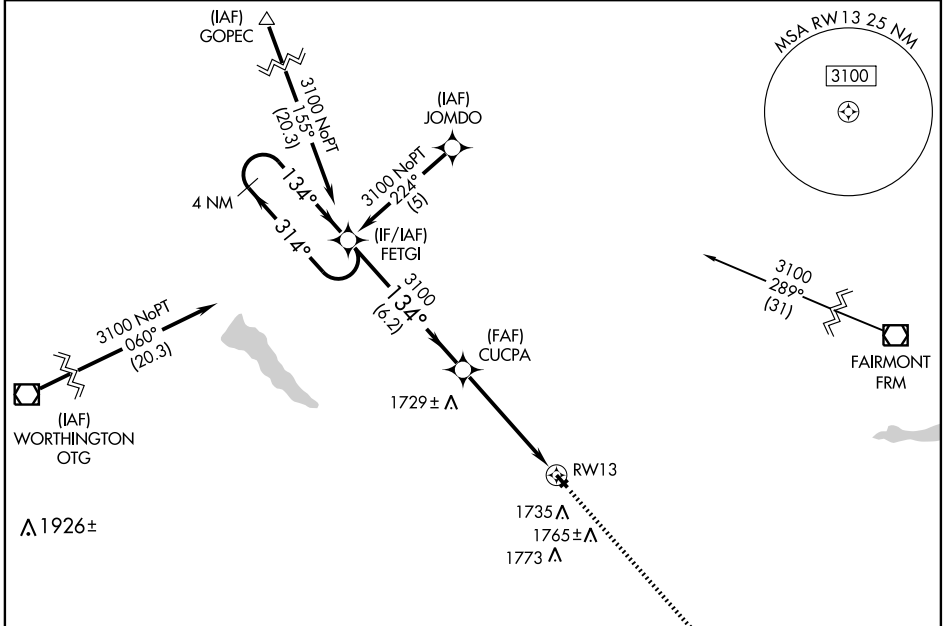
JACKSON MUNI (MJQ)

APP CRS <b>134°</b>	Rwy Idg <b>3591</b>
	TDZE <b>1445</b>
	Apt Elev <b>1446</b>

**⚠** DME/DME RNP -0.3 NA.  
**⚠** Visibility reduction by helicopters NA.  
 When local altimeter setting not received, use Estherville altimeter setting and increase all MDAs 60 feet and visibility Cat C ¼ mile.

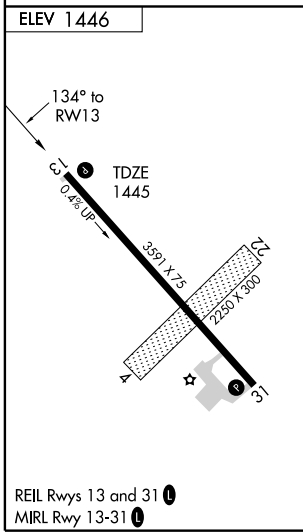
MISSED APPROACH: Climb to 4200 direct MCQIN and hold.

AWOS-3 <b>353</b>	MINNEAPOLIS CENTER <b>127.75 257.7</b>	GCO <b>121.725</b>	UNICOM <b>122.8 (CTAF) 0</b>
----------------------	---	-----------------------	---------------------------------

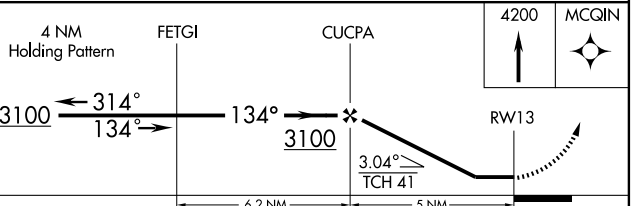


NC-1, 22 OCT 2009 to 19 NOV 2009

NC-1, 22 OCT 2009 to 19 NOV 2009



Procedure NA for arrivals at OTG VOR/DME via V250 southwest bound.



CATEGORY	A	B	C	D
LNAV MDA	1920-1	475 (500-1)	1920-1¼ 475 (500-1¼)	NA
CIRCLING	2040-1	594 (600-1)	2040-1½ 594 (600-1½)	NA