

JACKSON, MINNESOTA

AI-5568 (FAA)

NDB RWY 13

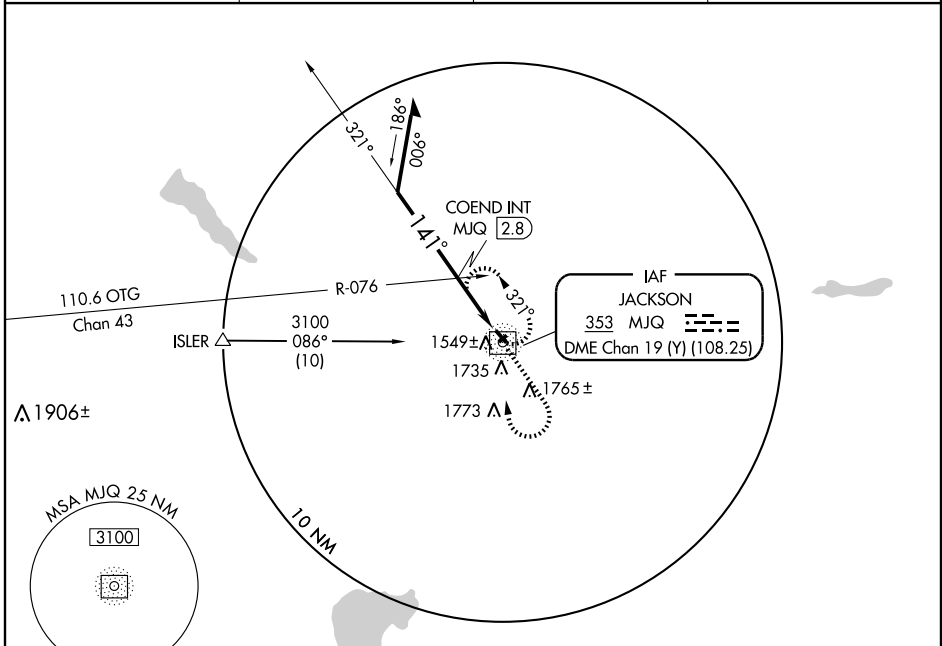
JACKSON MUNI (MJQ)

NDB/DME MJQ 353	APP CRS 141°	Rwy Idg 3591 TDZE 1445 Apt Elev 1446
DME Chan 19 (Y) (108.25)		

⚠ When local altimeter setting not received, use Estherville altimeter setting and increase all MDAs 60 feet and COEND FIX minimums S-13 visibility Cat C ¼ mile and circling Cat C ¼ mile.

MISSED APPROACH: Climb to 3100 then right turn direct MJQ NDB/DME and hold.

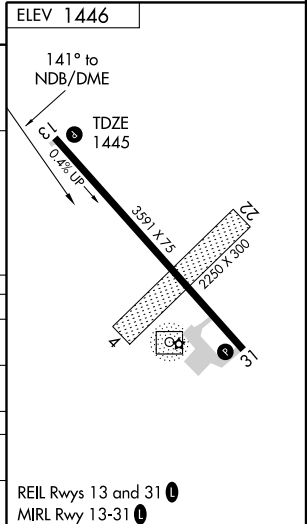
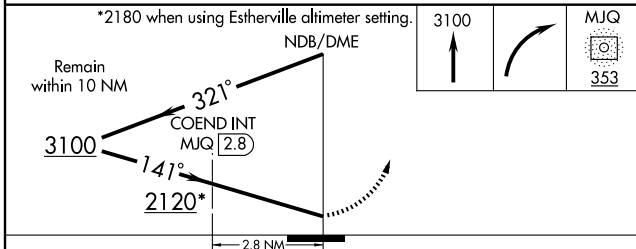
AWOS-3 353	MINNEAPOLIS CENTER 127.75 257.7	GCO 121.725	UNICOM 122.8 (CTAF)
----------------------	---	-----------------------	-------------------------------



NC-1, 22 OCT 2009 to 19 NOV 2009

NC-1, 22 OCT 2009 to 19 NOV 2009

*2180 when using Estherville altimeter setting.



CATEGORY	A	B	C	D
S-13	2120-1	675 (700-1)	2120-2 675 (700-2)	NA
CIRCLING	2120-1	674 (700-1)	2120-2 674 (700-2)	NA
COEND FIX MINIMUMS				
S-13	1940-1	495 (500-1)	1940-1½ 495 (500-1½)	NA
CIRCLING	2040-1	594 (600-1)	2040-1½ 594 (600-1½)	NA

JACKSON, MINNESOTA
Amdt 10 09015

43°39'N - 94°59'W

JACKSON MUNI (MJQ)

NDB RWY 13

REIL Rwy 13 and 31
MIRL Rwy 13-31