

BOWIE, TEXAS

AL-5567 (FAA)

# RNAV (GPS) RWY 17

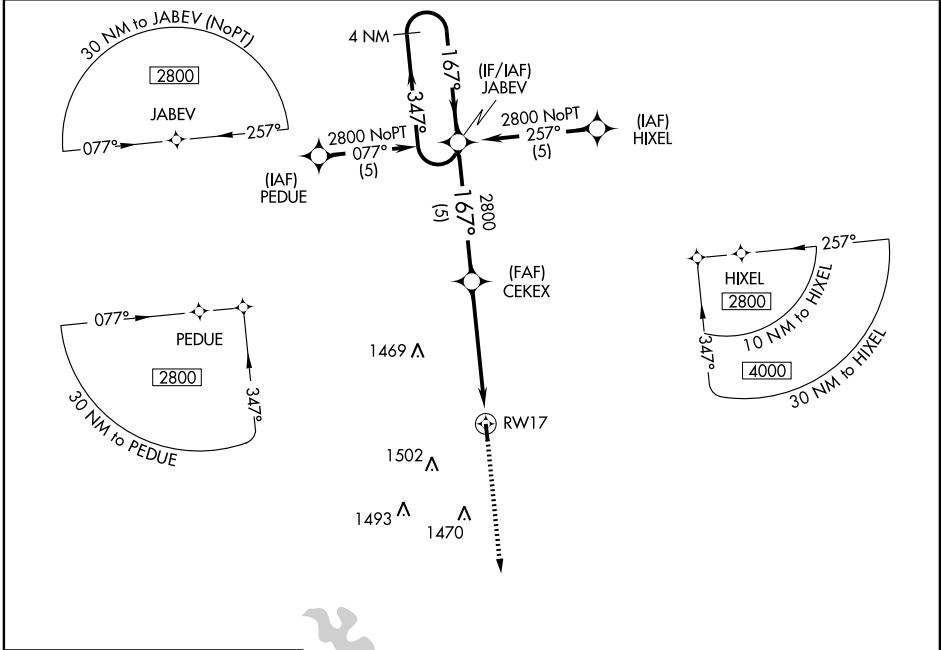
BOWIE MUNI (ØF2)

APP CRS <b>167°</b>	Rwy Idg TDZE Apt Elev	<b>3603</b> <b>1101</b> <b>1101</b>
------------------------	-----------------------------	---

**▽** GPS or RNP-0.3 required. DME/DME RNP-0.3 NA. **MISSED APPROACH:** Climb to 3000 direct to FENUP WP and hold.

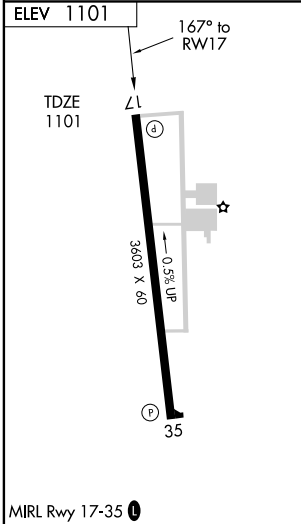
**▲ NA** Use Sheppard AFB/Wichita Falls Muni altimeter setting.

AWOS-3 <b>118.75</b>	FORT WORTH CENTER <b>133.25 285.55</b>	UNICOM <b>122.8 (CTAF) Ø</b>
-------------------------	---	---------------------------------



SC-2, 22 OCT 2009 to 19 NOV 2009

SC-2, 22 OCT 2009 to 19 NOV 2009



4 NM Holding Pattern		JABEV	CEKEX	3000	FENUP
2800 ← 347°		→ 167°		2800	→ 167°
		5 NM		5.1 NM	
3.04° TCH 45					
3000					
CATEGORY		A	B	C	D
LNAV MDA		1640-1	539 (600-1)	1640-1½ 539 (600-1½)	NA
CIRCLING		1660-1	559 (600-1)	1680-1½ 579 (600-1½)	NA

BOWIE, TEXAS  
Orig 09127

33°36'N-97°47'W

# RNAV (GPS) RWY 17

BOWIE MUNI (ØF2)