

WAAS CH 58307 W16A	APP CRS 161°	Rwy Idg 4002 TDZE 168 Apt Elev 168
--	------------------------	---

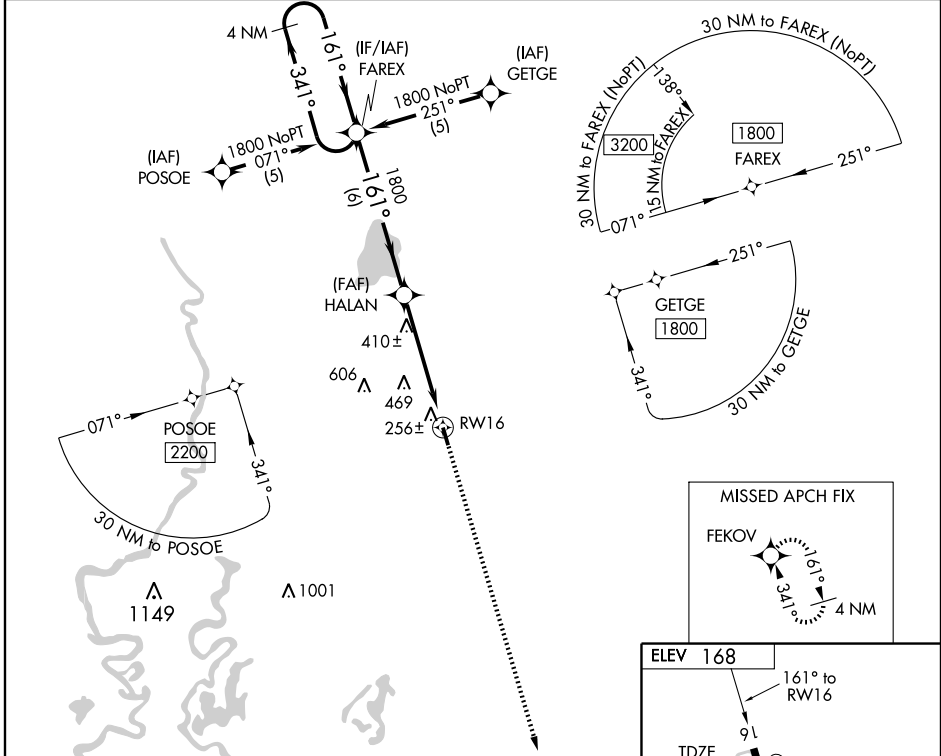
RNAV (GPS) RWY 16

BASTROP/MOREHOUSE MEMORIAL (BQP)

▼ For uncompensated Baro-VNAV systems, LNAV/VNAV NA below -1.5°C (5°F) or above 54°C (130°F). DME/DME RNP-0.3 NA. Visibility reduction by helicopters NA. When local altimeter setting not received, use Monroe altimeter setting and increase all DA/MDA 60 feet and all visibilities ¼ mile. Baro-VNAV NA when using Monroe altimeter setting. VDP NA when using Monroe altimeter setting.

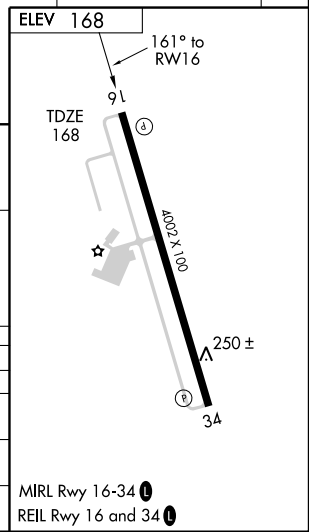
⚠ MISSED APPROACH: Climb to 1800 direct FEKOV and hold.

AWOS-3 118.375	MONROE APP CON ★ 126.9 307.9	GCO 135.075	UNICOM 122.8 (CTAF) 0
--------------------------	--	-----------------------	---------------------------------



SC-4, 22 OCT 2009 to 19 NOV 2009

SC-4, 22 OCT 2009 to 19 NOV 2009



4 NM Holding Pattern	FAREX	HALAN	*LNAV only.	1800	FEKOV
1800 ← 341° 161° →	161°	1800	*1.6 NM to RW16	↑	✧
GS 3.00° TCH 50					
	6 NM	3.3 NM	1.6 NM		
CATEGORY	A	B	C	D	
LPV DA		499-1¼	331 (400-1¼)	NA	
LNAV/VNAV DA		526-1¼	358 (400-1¼)	NA	
LNAV MDA	720-1	552 (600-1)	720-1½ 552 (600-1½)	NA	
CIRCLING	720-1	552 (600-1)	720-1½ 552 (600-1½)	NA	

MIRL Rwy 16-34 0
REIL Rwy 16 and 34 0