

MUSCATINE, IOWA

AL-5564 (FAA)

# RNAV (GPS) RWY 6

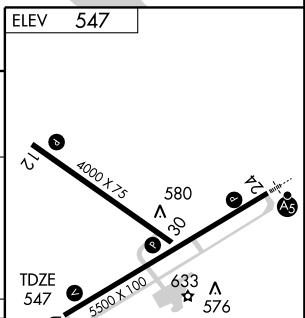
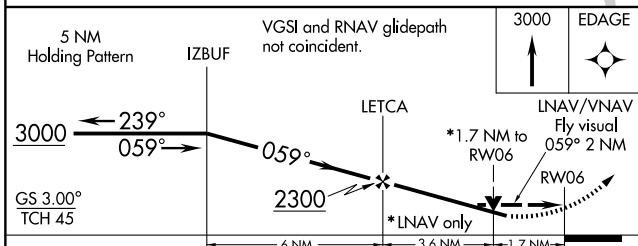
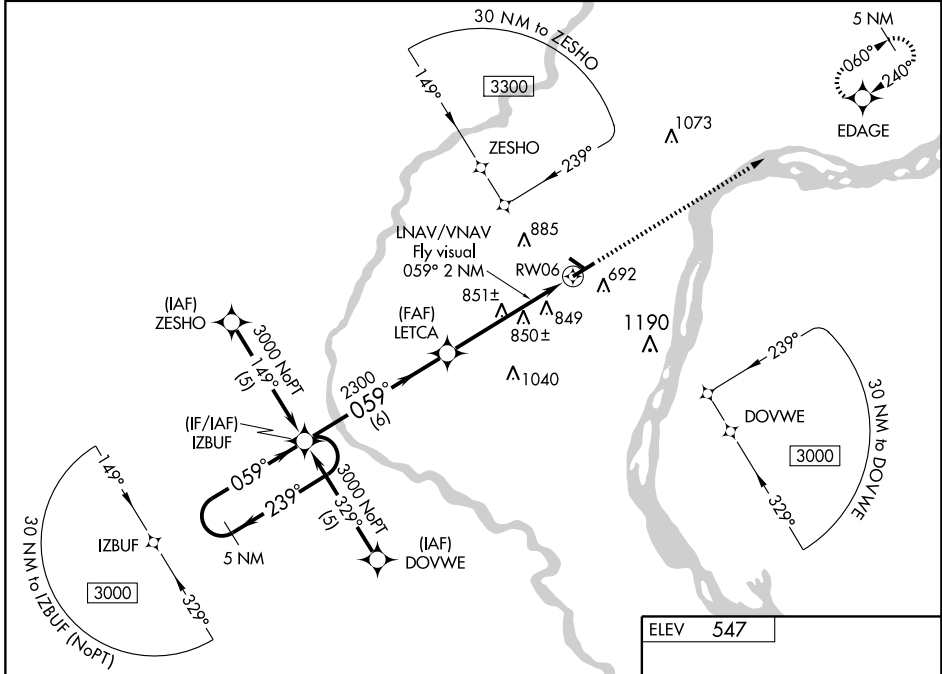
MUSCATINE MUNI (MUT)

WAAS CH <b>53701</b> W06A	APP CRS <b>059°</b>	Rwy ldg <b>5500</b> TDZE <b>547</b> Apt Elev <b>547</b>
---------------------------------	------------------------	---

**⚠** DME/DME RNP-0.3 NA. Visibility reductions by helicopters NA.  
 For uncompensated Baro-VNAV systems, LNAV/VNAV NA below -16°C (4°F) or above 48°C (118°F).  
 If local altimeter setting not received, use Iowa City Muni altimeter setting and increase all DAs/MDAs 80 feet.  
 Baro-VNAV and VDP NA when using Iowa City Muni altimeter setting.

MISSED APPROACH: Climb to 3000 direct EDAGE and hold.

AWOS-3 <b>119.775</b>	QUAD CITY APP CON* <b>118.2 257.8</b>	CLNC DEL <b>124.25</b>	UNICOM <b>122.7 (CTAF) 0</b>
--------------------------	--	---------------------------	---------------------------------



CATEGORY	A	B	C	D
LPV DA	1076-2 529 (600-2)			
LNAV/VNAV DA	1232-2 685 (700-2)		1232-2¼ 685 (700-2¼)	
LNAV MDA	1120-1 573 (600-1)	1120-1½ 573 (600-1½)		1120-1¾ 573 (600-1¾)
CIRCLING	1120-2½ 573 (600-2½)	1160-2½ 613 (700-2½)	1200-2½	653 (700-2½)

REIL Rwy 6, 12, and 30 **0**  
 MIRL Rwy 6-24 and 12-30 **0**

NC-3, 22 OCT 2009 to 19 NOV 2009

NC-3, 22 OCT 2009 to 19 NOV 2009

MUSCATINE, IOWA  
 Orig 08101

41°22'N-91°09'W

# RNAV (GPS) RWY 6