

RNAV (GPS) RWY 24

MUSCATINE MUNI (MUT)

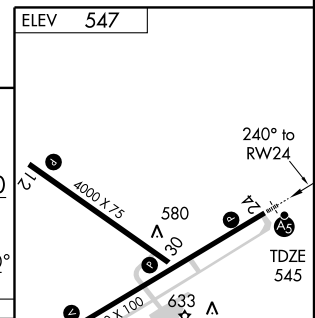
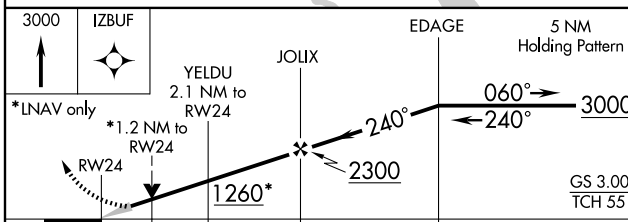
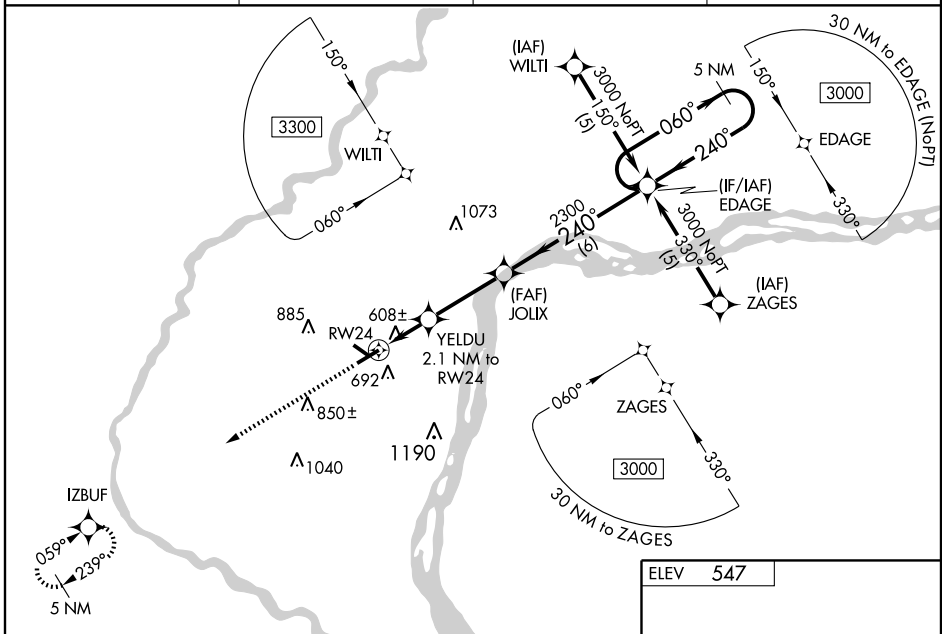
WAAS CH 99701 W24A	APP CRS 240°	Rwy Idg TDZE Apt Elev	5500 545 547
--	------------------------	-----------------------------	---

⚠ DME/DME RNP-0.3 NA.
⚠ For inoperative MALS/R, increase LPV all Cats. visibility to 1, LNAV Cat. D visibility to 1½.
 For uncompensated Baro-VNAV systems, LNAV/VNAV NA below -16°C (4°F) or above 48°C (118°F).
 If local altimeter setting not received, use Iowa City Muni altimeter setting and increase all DAs/MDAs 80 feet.
 Baro-VNAV and VDP NA when using Iowa City Muni altimeter setting.

MALS/R

MISSED APPROACH: Climb to 3000 direct IZBUF and hold.

AWOS-3 119.775	QUAD CITY APP CON * 118.2 257.8	CLNC DEL 124.25	UNICOM 122.7 (CTAF) 0
--------------------------	---	---------------------------	---------------------------------



CATEGORY	A	B	C	D
LPV DA		812-½	267 (300-½)	
LNAV/VNAV DA		874-¾	329 (400-¾)	
LNAV MDA	960-½	415 (500-½)	960-¾ 415 (500-¾)	960-1 415 (500-1)
CIRCLING	1000-1¼ 453 (500-1¼)	1160-1¼ 613 (700-1¼)	1200-1¾ 653 (700-1¾)	1200-2 653 (700-2)

REIL Rws 6, 12, and 30
 MIRL Rwy 6-24 and 12-30

NC-3, 22 OCT 2009 to 19 NOV 2009

NC-3, 22 OCT 2009 to 19 NOV 2009