

VOR/DME-A

BATAVIA/GENESEE COUNTY (GVQ)

VOR/DME GEE 108.2 Chan 19	APP CRS 311°	Rwy Idg TDZE Apt Elev N/A N/A 913
---	------------------------	---

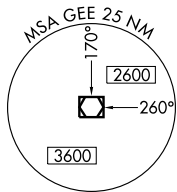
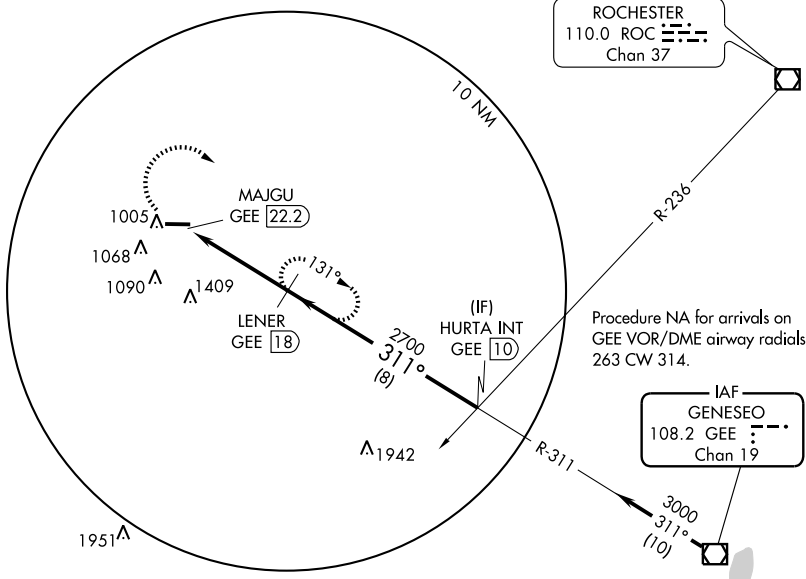
NA When local altimeter setting not received, use Rochester altimeter setting and increase all MDA 120 feet; increase Cat C and D visibility 1/2 mile.

MISSED APPROACH: Climbing right turn to 3000 via GEE VOR/DME R-311 to LENER/18 DME and hold, continue to climb-in-hold to 3000.

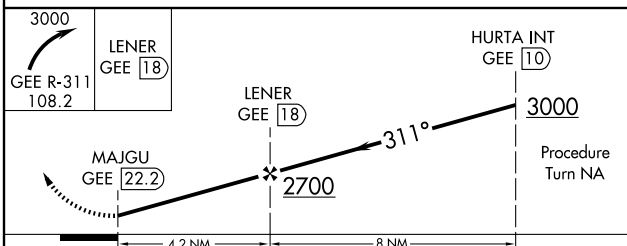
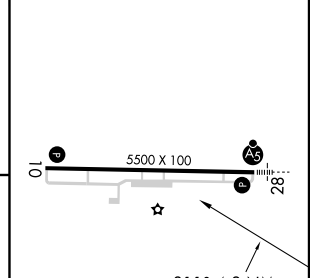
AWOS-3 127.525	ROCHESTER APP CON 123.7 322.3	CINC DEL 121.8	UNICOM 122.7 (CTAF) 0
--------------------------	---	--------------------------	--

NE-2, 22 OCT 2009 to 19 NOV 2009

NE-2, 22 OCT 2009 to 19 NOV 2009



ELEV 913



CATEGORY	A	B	C	D
CIRCLING	1620-1 707 (800-1)	1620-1 1/4 707 (800-1 1/4)	1620-2 707 (800-2)	1620-2 1/4 707 (800-2 1/4)

REIL Rwy 10 and 28 **0**
HIRL Rwy 10-28 **0**