

RNAV (GPS) RWY 28

BATAVIA/GENESEE COUNTY (G/VQ)

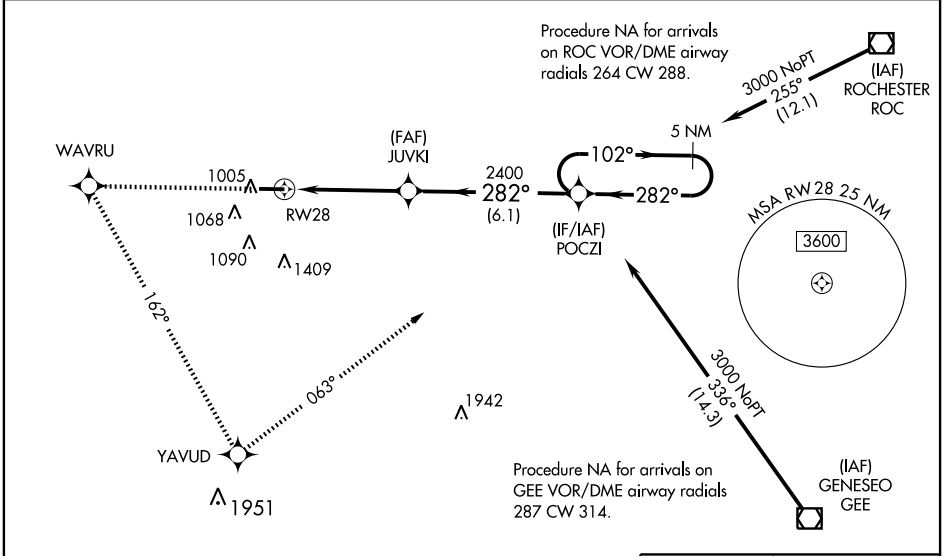
WAAS CH 86311 W28A	APP CRS 282°	Rwy Idg TDZE Apt Elev	5500 911 913
----------------------------------------	------------------------	-----------------------------	-----------------------------------------

NA For uncompensated Baro-VNAV systems, LNAV/VNAV NA below -16°C (4°F) or above 46°C (114°F). DME/DME RNP-0.3 NA. When local altimeter setting not received, use Rochester altimeter setting and increase all DA 102 feet and all MDA 120 feet; increase LPV all Cats visibility 1/4 mile, LNAV/VNAV all Cats visibility 1/2 mile, LNAV Cat C and Circling Cat D visibility 1/4 mile. Baro-VNAV and VDP NA when using Rochester altimeter setting. For inoperative MALSR increase LNAV Cat D visibility to 1/4 mile. For inoperative MALSR, when using Rochester altimeter setting increase LPV visibility all Cats to 1/4 mile.



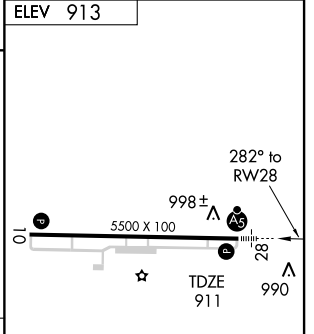
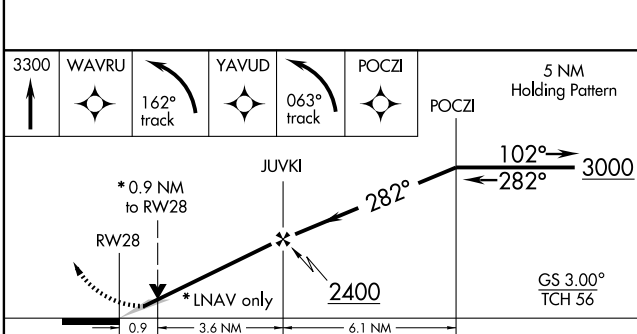
MISSED APPROACH: Climb to 3300 direct WAVRU and left turn via 162° track to YAVUD and left turn via 063° track to POCZI and hold.

AWOS-3 127.525	ROCHESTER APP CON 123.7 322.3	CLNC DEL 121.8	UNICOM 122.7 (CTAF)
--------------------------	-----------------------------------------	--------------------------	-------------------------------



NE-2, 22 OCT 2009 to 19 NOV 2009

NE-2, 22 OCT 2009 to 19 NOV 2009



CATEGORY	A	B	C	D
LPV DA	1161-1/2		250 (300-1/2)	
LNAV/VNAV DA	1364-1		453 (500-1)	
LNAV MDA	1260-1/2		349 (400-1/2)	
			1260-1 349 (400-1)	
CIRCLING	1380-1 467 (500-1)		1380-1/2 467 (500-1/2)	
			1480-2 567 (600-2)	

REIL Rwy 10 and 28 **0**
HIRL Rwy 10-28 **0**