

BATAVIA, NEW YORK


AL-5562 (FAA)

ILS or LOC RWY 28

BATAVIA/GENESEEE COUNTY (GVQ)

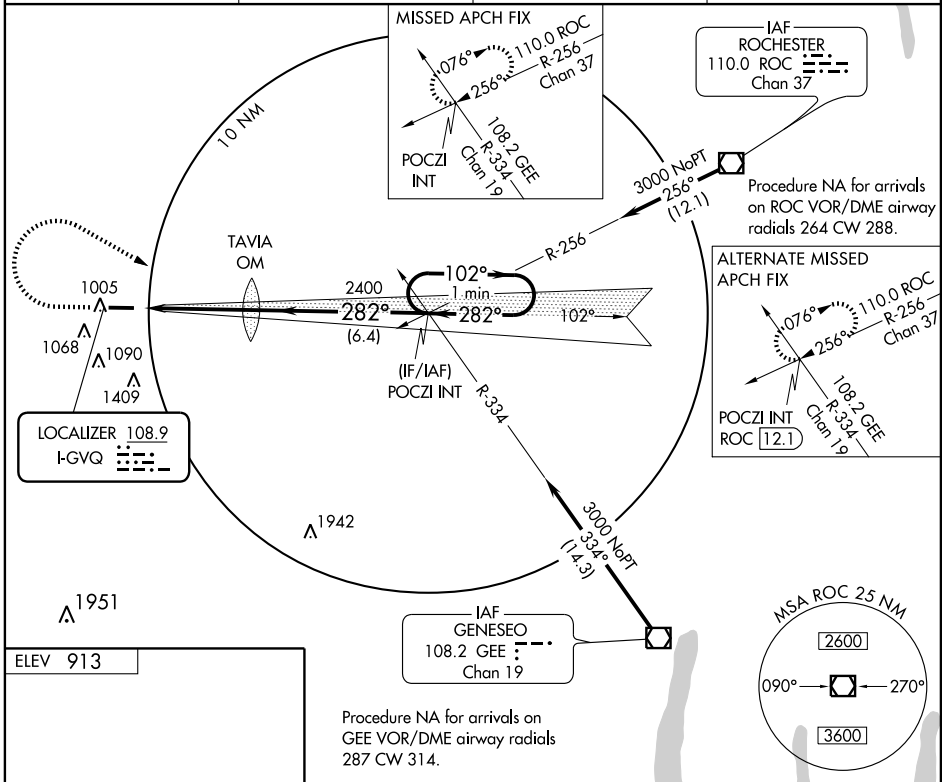
LOC I-GVQ 108.9	APP CRS 282°	Rwy Idg TDZE Apt Elev	5500 911 913
---------------------------	------------------------	-----------------------------	---

▼ When local altimeter setting not received, use Rochester altimeter setting and increase all DA 102 feet and all MDA 120 feet;
▲ NA increase S-LOC 28 Cats C/D and Circling Cat D visibility 1/4 mile.

MALSRR 

MISSED APPROACH: Climb to 1500 then climbing right turn to 3000 via heading 130° and I-GVQ east course to POCZI INT and hold.

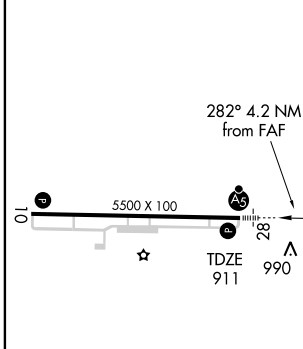
AWOS-3 127.525	ROCHESTER APP CON 123.7 322.3	CLNC DEL 121.8	UNICOM 122.7 (CTAF) 
--------------------------	---	--------------------------	---





NE-2, 22 OCT 2009 to 19 NOV 2009

NE-2, 22 OCT 2009 to 19 NOV 2009

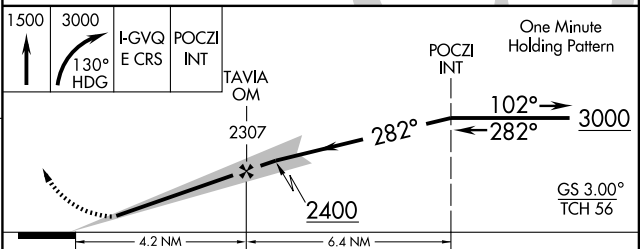
ELEV 913



REIL Rwy 10 and 28 
 HIRL Rwy 10-28 

FAF to MAP 4.2 NM

Knots	60	90	120	150	180
Min:Sec	4:12	2:48	2:06	1:41	1:24



CATEGORY	A	B	C	D
S-ILS 28	1111-1/2 200 (200-1/2)			
S-LOC 28	1260-1/2 349 (400-1/2)			1260-3/4 349 (400-3/4)
CIRCLING	1380-1	467 (500-1)	1380-1 1/2 467 (500-1 1/2)	1480-2 567 (600-2)

BATAVIA, NEW YORK
 Amdt 6A 09127

43°02'N - 78°10'W

ILS or LOC RWY 28