

GPS RWY 27

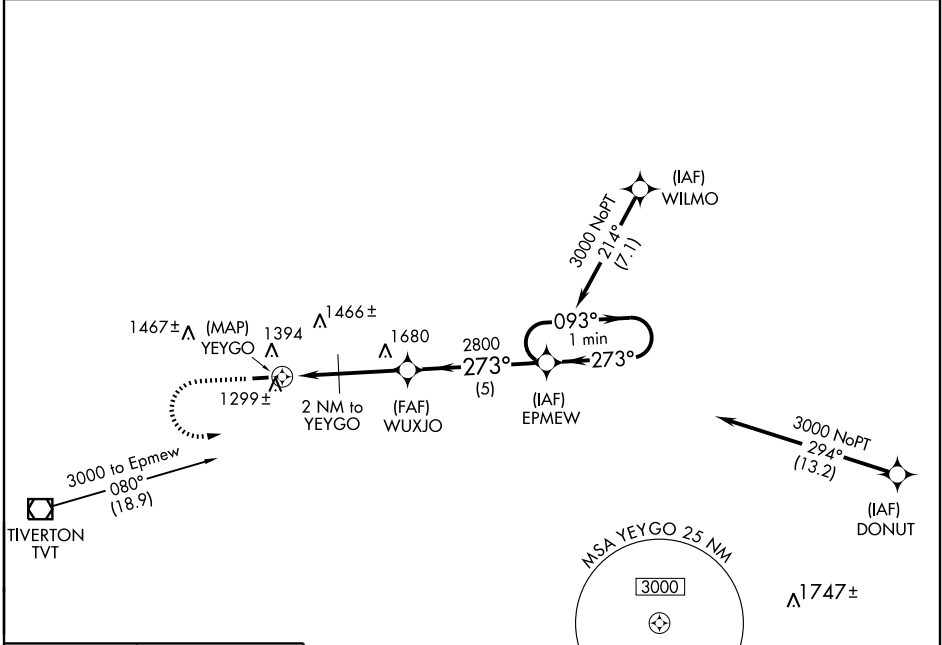
MILLERSBURG/HOLMES COUNTY (10G)

| | |
|------------------------|-------------------------|
| APP CRS 273° | Rwy Idg 3498 |
| | TDZE 1216 |
| | Apt Elev 1218 |

▽ Obtain local altimeter setting on CTAF; when not received, use Akron-Canton Rgnl altimeter setting.
△ NA

MISSED APPROACH: Climb to 1800 then climbing left turn to 3000 direct EPMEW WP and hold.

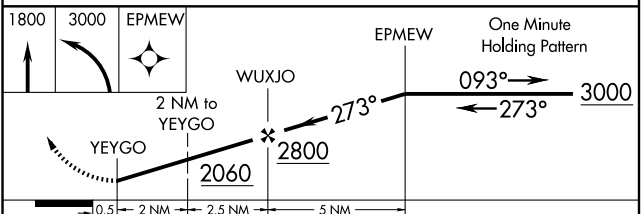
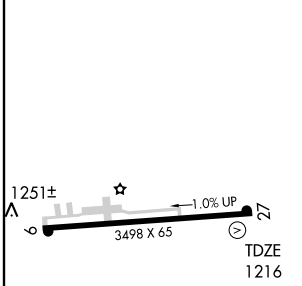
| | | | |
|--------------------------|--|-------------------------------|----------------|
| AWOS-3 128.325 | INDIANAPOLIS CENTER 124.45 370.9 | UNICOM 123.0 (CTAF) | 123.4 0 |
|--------------------------|--|-------------------------------|----------------|



EC-2, 22 OCT 2009 to 19 NOV 2009

EC-2, 22 OCT 2009 to 19 NOV 2009

ELEV 1218



| CATEGORY | A | B | C | D |
|--|--------|-------------|-------------------------|-------------------------|
| S-27 | 1600-1 | 384 (400-1) | | 1600-1¼ 384 (400-1¼) |
| CIRCLING | 1760-1 | 542 (600-1) | 1760-1½ 542 (600-1½) | 1780-2 562 (600-2) |
| AKRON-CANTON RGNL ALTIMETER SETTING MINIMUMS | | | | |
| S-27 | 1680-1 | 464 (500-1) | 1680-1¼ 464 (500-1¼) | 1680-1½ 464 (500-1½) |
| CIRCLING | 1820-1 | 602 (700-1) | 1820-1¾ 602 (700-1¾) | 1820-2 602 (700-2) |

MIRL Rwy 9-27 **0**
 REIL Rwys 9 and 27 **0**