

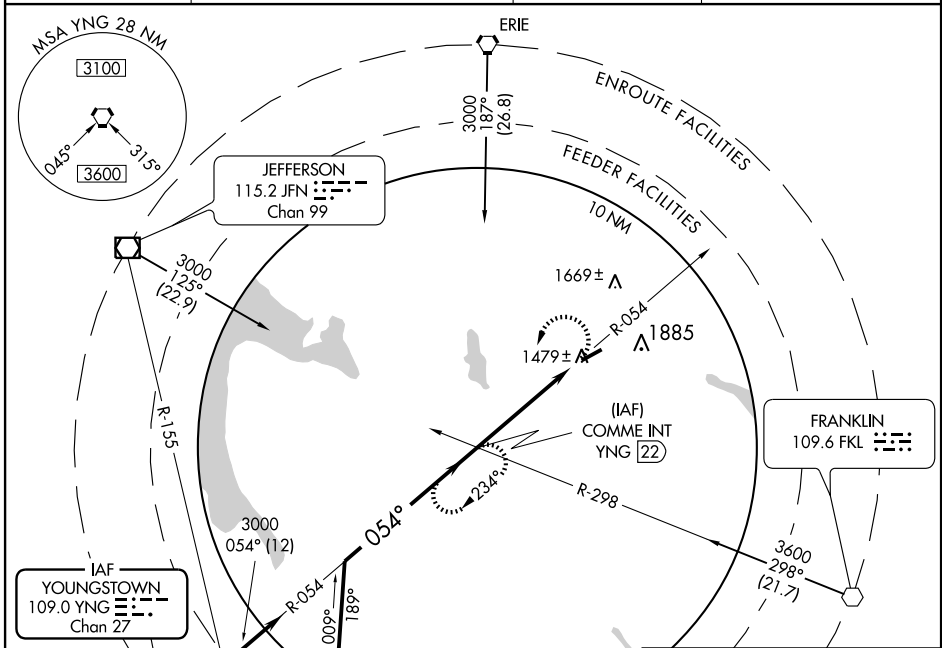
# VOR RWY 7

MEADVILLE / PORT MEADVILLE (GKJ)

VORTAC YNG <b>109.0</b> Chan 27	APP CRS <b>054°</b>	Rwy Idg <b>5001</b> TDZE <b>1400</b> Apt Elev <b>1400</b>
---------------------------------------	------------------------	---

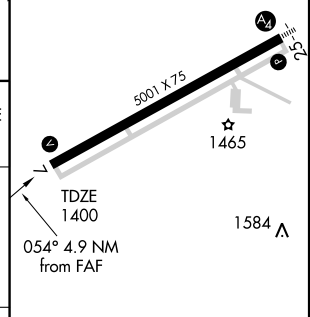
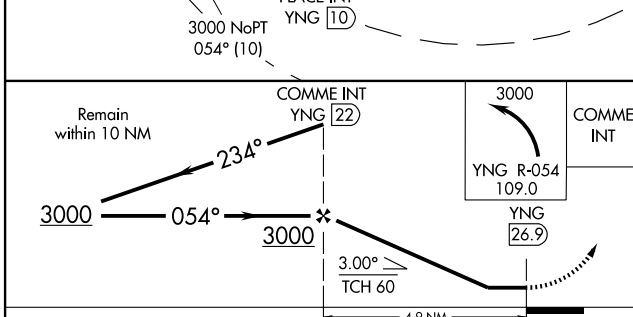
MISSED APPROACH: Climbing left turn to 3000 via YNG R-054 to COMME Int and hold.

ASOS <b>121.425</b>	YOUNGSTOWN APP CON * <b>133.95 322.3</b>	CLNC DEL <b>124.95</b>	UNICOM <b>123.0 (CTAF)</b>
------------------------	---	---------------------------	-------------------------------



NE-4, 22 OCT 2009 to 19 NOV 2009

NE-4, 22 OCT 2009 to 19 NOV 2009



CATEGORY	A	B	C	D
S-7	1940-1 540 (600-1)	1940-1¼ 540 (600-1¼)	1940-1½ 540 (600-1½)	1940-2 540 (600-2)
CIRCLING	1940-1 540 (600-1)	2200-1¼ 800 (800-1¼)	2200-2¼ 800 (800-2¼)	2200-2½ 800 (800-2½)

MIRL Rwy 7-25

FAF to MAP 4.9 NM					
Knots	60	90	120	150	180
Min:Sec	4:54	3:16	2:27	1:58	1:38

# VOR RWY 7